



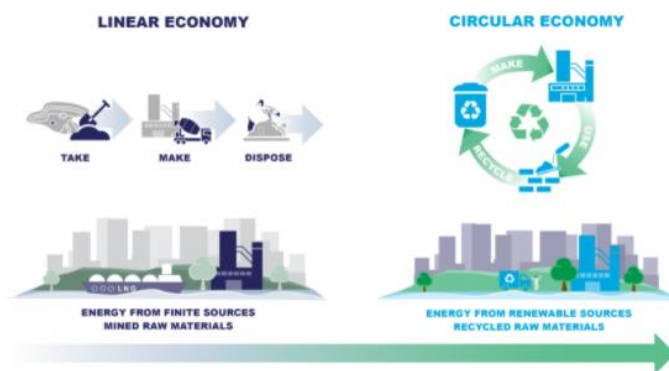
## Adelaide Brighton Cement Ltd

an **ADBRI** company

Adelaide Brighton Cement

August 2021

### Alternative Fuels and Raw Materials



Cement is a critical material for all our infrastructure. It is essential for the manufacture of concrete and after water, concrete is the second most consumed material in the world.

For more than a century, Adelaide Brighton Cement's cement has been used to build homes and complete DIY projects around Australia. It has also been used in vital infrastructure including roads, airports, schools and hospitals.

The cement production process is energy intensive due to the high temperatures required in the manufacturing process. Traditionally, it has also relied on fossil fuels.

As part of ABC's vision to help build a sustainable future for all Australians, our Birkenhead cement facility is replacing these fossil fuels with alternatives made from waste that otherwise could not be recycled.

We were among the first to introduce alternative **fuels in Australia, helping lead the cement industry's transition to a more circular economy.**

[READ MORE](#)

## Kiln RDF: Continuing the success of ABC's alternative fuels



At our Birkenhead facility, we continuously seek to find ways to improve the sustainability of our cement manufacturing operations. We are proposing to build on the success of our Alternative Fuels and Raw Materials (AFRM) program by introducing RDF into our Kiln process.

The Kiln RDF project will build on the success of our Calciner RDF, which has been safely used as an alternative fuel at Birkenhead since 2003. It involves further reducing our fossil fuel reliance by introducing RDF sourced from municipal solid waste into the Kiln process at our Birkenhead facility.

By transforming unrecyclable materials into a resource for the cement industry, we can give new life to some of our community's most difficult to recycle materials, helping with Australia's transition to a circular economy.



[READ MORE ON KILN RDF PROJECT HERE](#)

## Community Liaison Group Meeting - Monday, 6 September



We consult extensively with local community members via the Adelaide Brighton Cement Community Liaison Group (CLG). CLG meetings are held quarterly and provide an opportunity for the community to hear firsthand about our operations, to ask questions, and to provide feedback directly.

### What you need to know

Monday, 6 September

18:00 - 19:30, Adelaide Time

Port Adelaide Town Hall

Nile Street, Port Adelaide, SA

If COVID restrictions require, this meeting will be held by videoconference.

Please check our [website](#) for any changes.



### ABC Supports SA Science and Engineering Challenge

Adelaide Brighton Cement is proud to be the major sponsor for the SA 2021 Science and Engineering Challenge (SEC), The Science and Engineering Challenge was held this year over 7 days in Adelaide between 7 and 16 June at Festival Functions centre in Findon.

1,229 students from 51 schools across Adelaide, 104 teachers attended and supervision and

encouragement was resourced by 120 volunteer-days.  
In Adelaide the winning school for each day was:

- Temple Christian College
- Portside Christian College
- Faith Lutheran College
- Cardijn College
- Emmaus Christian College
- Pedare Christian College
- Temple Christian College (year 11 day)

The Science & Engineering Challenge (the Challenge) is an outreach program that encourages years 9 &10 students to study science, engineering, technology and maths subjects through years 11 & 12 to enable them to undertake tertiary-level courses in science and engineering.

[READ MORE ABOUT THE CHALLENGE HERE](#)

### Environmental Improvement Projects Update

Adelaide Brighton Cement's Birkenhead plant works with the EPA and the local community to deliver an Environmental Improvement Programme (EIP).

[BIRKENHEAD EIP PROGRAMME](#)

[To get the latest update on our current projects, please see the latest EIP report here](#)



[view this email in your browser](#)

Copyright © 2021 Adelaide Brighton Cement, All rights reserved.

Further information visit

<https://adelaidebrightoncommunity.com.au/>

You can speak to a member of the team,  
24 hours a day, 7 days a week on 08 8300 0520

Want to change how you receive these emails?  
You can [update your preferences](#) or [unsubscribe from this list](#).