

# ABC Birkenhead's Alternative Raw Materials

Black Sand (Processed Blast Furnace Slag) and Blended Mill Scale

ABC's Alternative Raw Material program (ARM), which is focused on reducing the reliance on non-renewable resources has completely replaced the use of naturally occurring ironstone with Black Sand (Processed Blast Furnace Slag) and Blended Mill Scale. These are waste by-products from other industries that would otherwise go to landfill.

Within the cement manufacturing process, alternative raw materials rich in calcium, silica, alumina, or iron replace traditional mined raw materials such as limestone, clay, and ironstone.

**Black Sand (Processed Blast Furnace Slag)** is a by-product that is mainly composed of calcium, silica, iron, alumina with trace amounts of lead.

**Blended Mill scale** is an iron oxide by-product from the recycling of scrap steel

The successful reuse of these process waste products, that would otherwise go to landfill, continues to improve the sustainability of ABC's Birkenhead operation, and contributes to the circular economy of South Australia.

Alternative raw materials improve the sustainability of ABC's Birkenhead operation, and contributes to the circular economy of South Australia.

---

Further information visit  
[www.adelaidebrightoncommunity.com.au](http://www.adelaidebrightoncommunity.com.au)

---

Email us at  
[BirkenheadCommunity@adbri.com.au](mailto:BirkenheadCommunity@adbri.com.au)

---

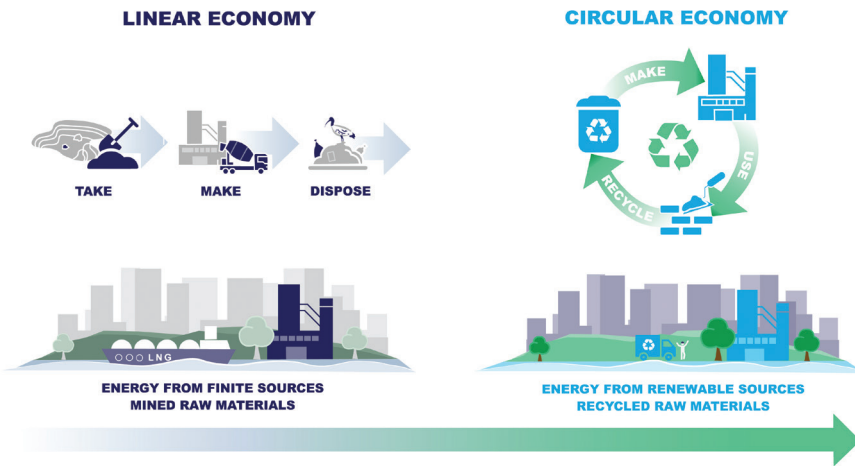
For matters that arise after hours,  
please contact our Community  
Hotline on 8300 0520

---



Adelaide Brighton Cement Ltd

an ADBRI company



The cement industry in Australia is contributing in the transition to a circular economy.

### Circular Economy

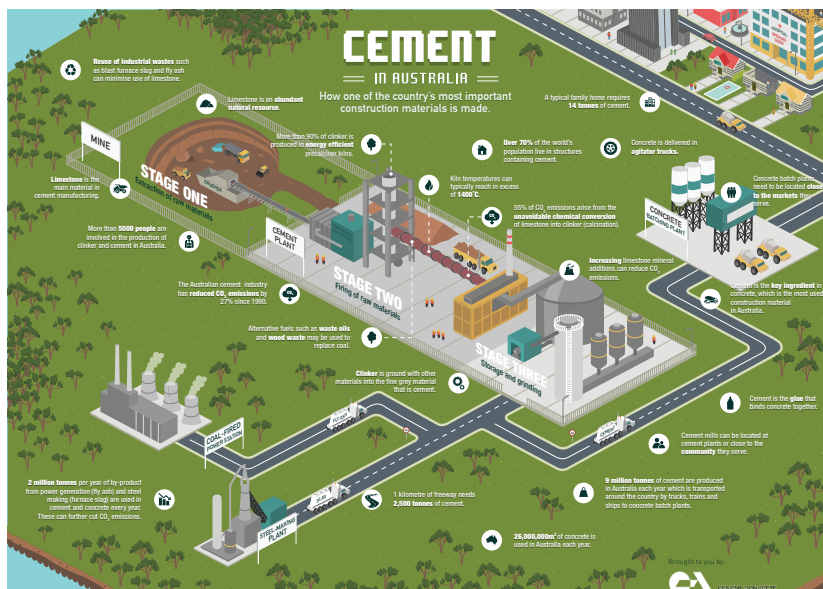
A circular economy continually seeks to reduce the environmental impacts of production and consumption through more productive use of natural resources, minimisation of waste, effective recovery and reuse of materials, co processing and a transition to renewable energy sources.

Learn more about circular economy and coprocessing.

### ARM and Emissions

More than a decade of consumption of Black Sand and Blended Mill Scale at the Birkenhead site has demonstrated that there are minimal emission impacts from their use as a replacement for mined ironstone.

The use of alternative raw materials also reduces the requirement for mined limestone and reduces CO2 emissions.



Further information visit [www.adelaidebrightoncommunity.com.au](http://www.adelaidebrightoncommunity.com.au)

Email us at [BirkenheadCommunity@adbri.com.au](mailto:BirkenheadCommunity@adbri.com.au)

For matters that arise after hours, please contact our Community Hotline on 8300 0520



**Adelaide Brighton Cement Ltd**

an ADBRI company