



Adelaide Brighton Cement Ltd

an **ADBRI** company

adelaidebrighton.com.au

Adelaide Brighton Cement Ltd
ABN 96 007 870 199
PO Box 77
Port Adelaide SA 5015
+61 8 8300 0300

QUARTERLY GROUND LEVEL PARTICULATE MONITORING REPORT FOR BIRKENHEAD WORKS

COMPLIANCE DATE: 31/07/22 - Quarter 2, 2022

**EPA Licence 1126: Ground Level Particulate Monitoring and
Reporting plan (U-729)**

Licensed site: Adelaide Brighton Cement, Birkenhead Works

62 Elder Road, Birkenhead, SA 5015

Date of Submission: 31 July 2022

Version Number: 1



Report Submitted by: Advisor Environment (C&L (SA/NSW/NT))

Glossary

Term	Definition
$\mu\text{g}/\text{m}^3$	micrograms per cubic metre
μm	micrometre
$^{\circ}\text{C}$	degrees Celsius
m	metre
m^3	cubic metre
m^3/s	cubic metres per second

Nomenclature	Definition
---------------------	-------------------

PM_{10}	Particulate matter with a diameter less than 10 micrometres
$\text{PM}_{2.5}$	Particulate matter with a diameter less than 2.5 micrometres
24 hour average	Calendar day (midnight to midnight)

Abbreviations	Definition
----------------------	-------------------

ABC	Adelaide Brighton Cement
Air EPP	South Australian Environment Protection (Air Quality) Policy 2016
GLPMRP	ABC's Ground Level Particulate Monitoring and Reporting Plan
EPA	Environment Protection Authority

Sampling Locations

- Map showing sampling locations, major infrastructure, sensitive environmental receptors, and north arrow



Sampling locations are indicated by colour-coded dots on the above map.

NB: Four sampling points are located on the Birkenhead Works site; the other sampling points are in the community (corner of Gunn/ Well streets and Community Park).

Monitoring Objective	<p>To provide monitoring and reporting of ground level particulate concentrations (PM₁₀ and PM_{2.5}), from a network of monitors located within and external to the site premises.</p> <ul style="list-style-type: none"> • Monitoring data for each monitor (on site and off site) shall include: <ul style="list-style-type: none"> ○ Monthly wind rose showing the distribution of wind directions ○ Monthly dust rose showing the distribution of PM₁₀ concentration ○ Monthly dust rose showing the distribution of PM_{2.5} concentration ○ Particulate monitoring data for each ABC monitor (on site and off site) including EPA monitor (Le Fevre 1) for comparison as follows; <ul style="list-style-type: none"> ○ Monthly time series graph of 24-hour average PM₁₀ concentration reported against the Air EPP for PM₁₀ of 50 micrograms per cubic metre (24-hour average). ○ Monthly time series graph of 24-hour average PM_{2.5} concentration reported against the Air EPP for PM_{2.5} of 25 micrograms per cubic metre (24-hour average).
Monitoring Plan	<p>This monitoring report has been prepared in compliance with the Ground Level Particulate Monitoring and Reporting Plan (GLPMRP), approved 18 June 2018 by the South Australian EPA.</p> <p>The Plan is available on the ABC Birkenhead Community Website: https://adelaidebrightoncommunity.com.au/</p>
Monitoring data for each ABC monitor	<p>Monitoring reports for April, May and June 2022 are attached.</p> <p>Monitoring reports provide for each monitor the following:</p> <ul style="list-style-type: none"> • PM_{2.5}, PM₁₀ 24-hour averages • PM_{2.5}, PM₁₀ monthly wind & dust rose <p>The property (not owned by ABC), on which the Gunn Street Monitor was located, was sold for redevelopment and was no longer available for use. As a consequence the monitor was removed on 28 June 2022. A new monitoring location is currently being determined.</p> <p>There has been an intermittent problem with data transfer from the monitors to Katestone FTP server. The equipment supplier Kenelec and Katestone have been involved in an ongoing investigation to identify the cause. All parties have not experienced this problem before. The intermittent data transfer has not reoccured since early June.</p> <p>There were no 24-hour exceedances of PM₁₀ and PM_{2.5} Air (EPP) criteria on ambient particulate monitors in the community, during this reporting period.</p>
Appendix	<p>April, May and June Monitoring Reports (attached)</p>

Contents

Monitoring Summary (01 Apr, 2022 - 30 Apr, 2022)	1
Public Monitors	1
Internal Monitors	6
EPA Monitoring	14

Monitoring Summary (01 Apr, 2022 - 30 Apr, 2022)

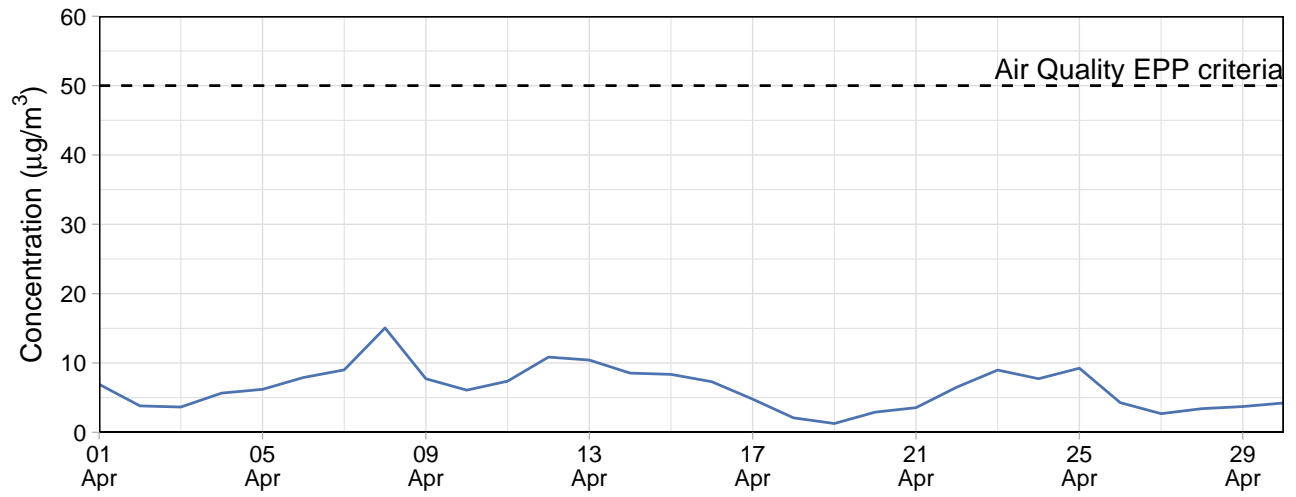
Public Monitors

Table 1: Summary of 24-hour average data collected at public monitors ($\mu\text{g}/\text{m}^3$)

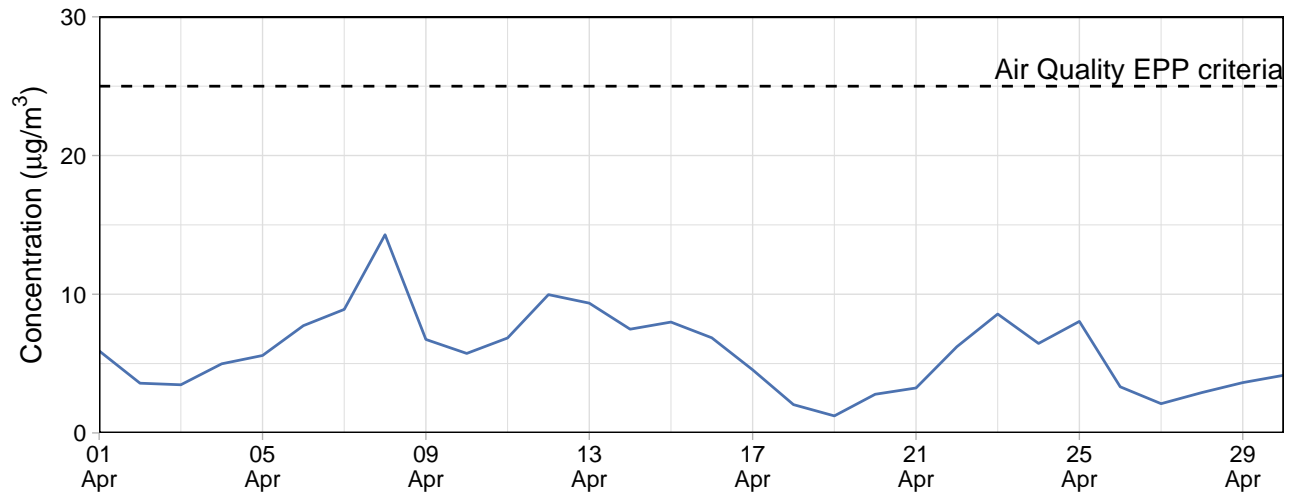
Site	PM ₁₀				PM _{2.5}			
	Min	Avg	Max	Capture (%)	Min	Avg	Max	Capture (%)
Community Park	1.3	6.3	15.1	100	1.2	5.8	14.3	100
Gunn Street	1.3	5.9	13.4	100	1.2	5.4	12.8	100

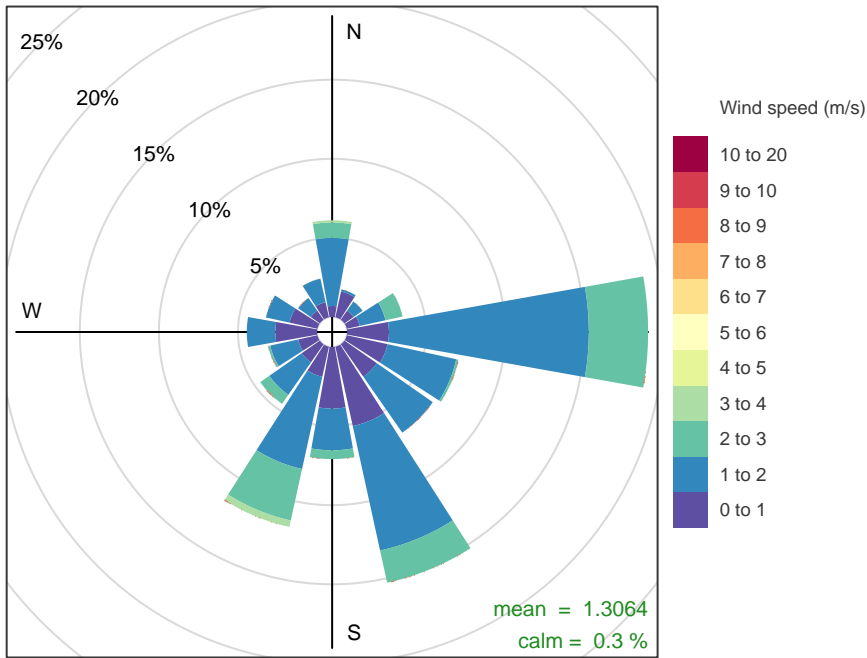
Community Park

Community Park – 24-hour average PM₁₀

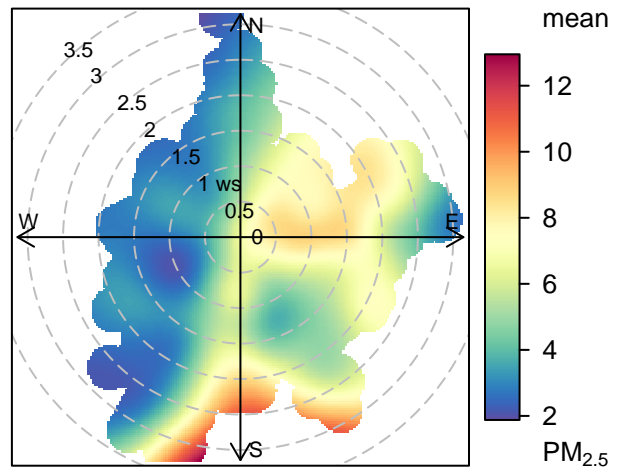
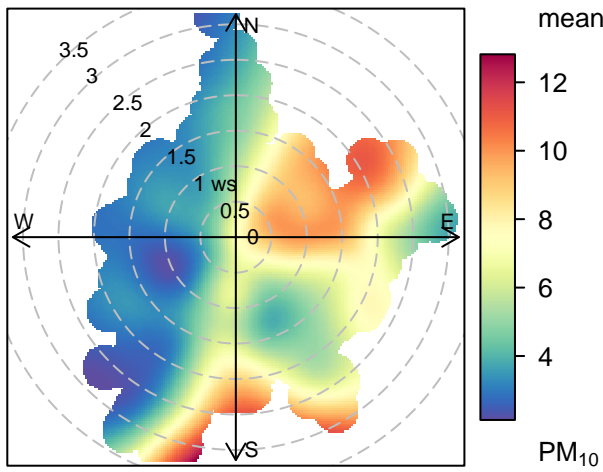


Community Park – 24-hour average PM_{2.5}

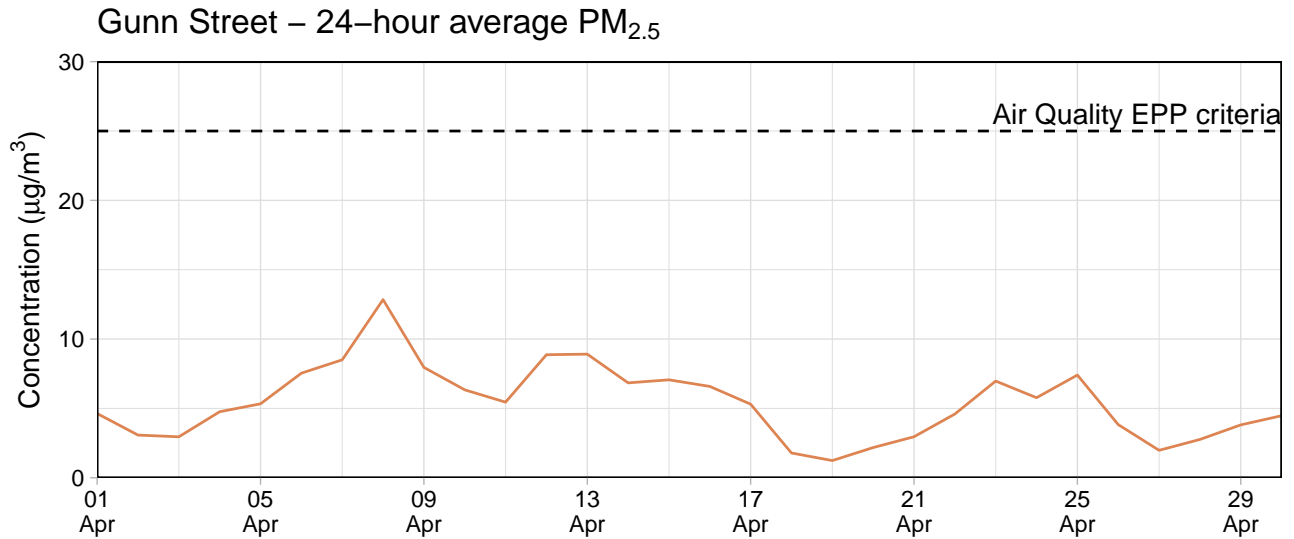
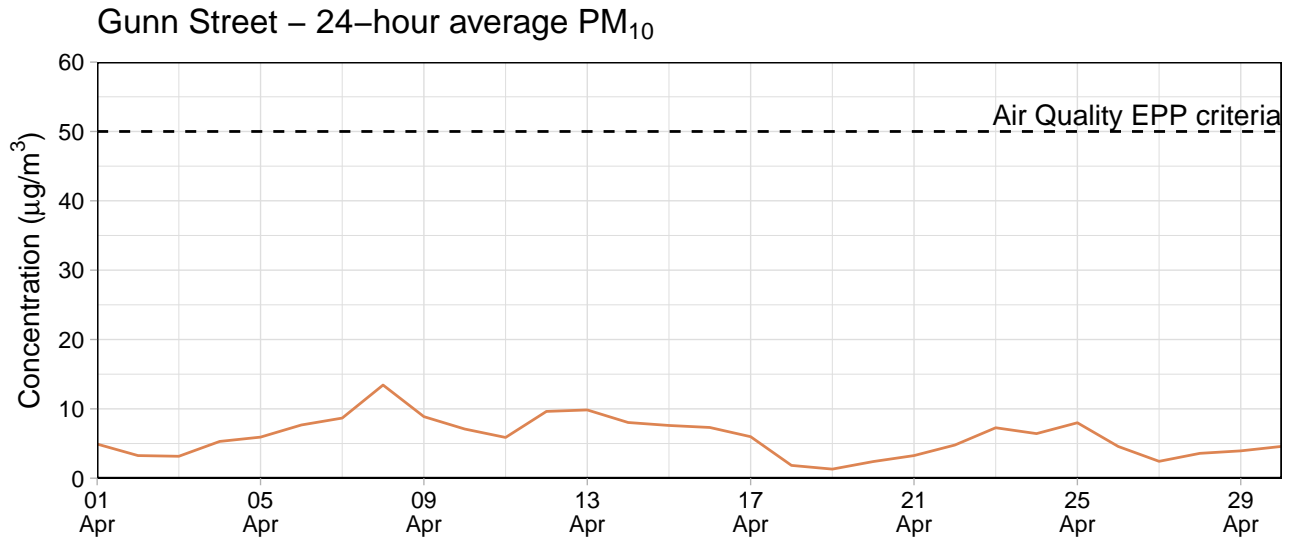


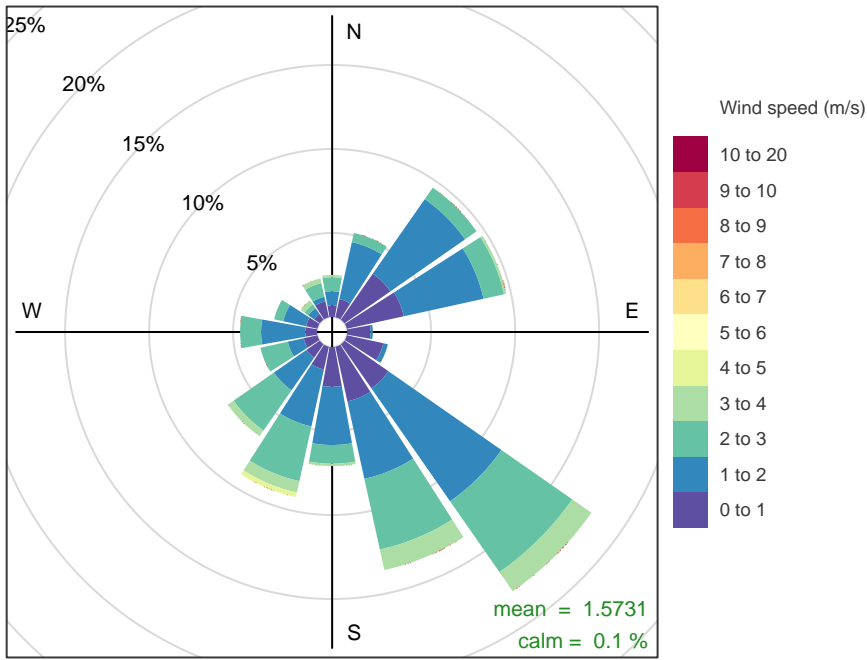


Frequency of counts by wind direction (%)

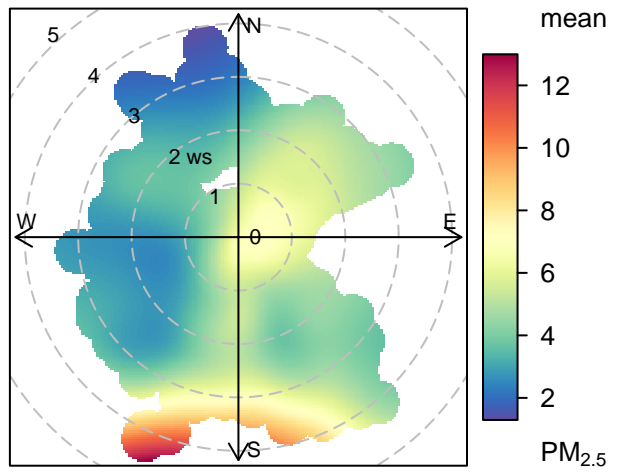
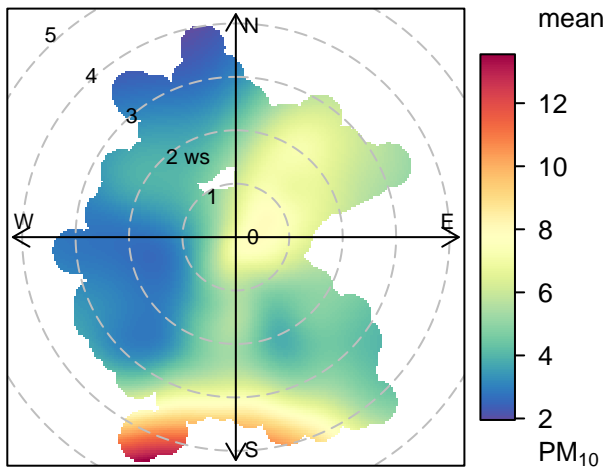


Gunn Street





Frequency of counts by wind direction (%)



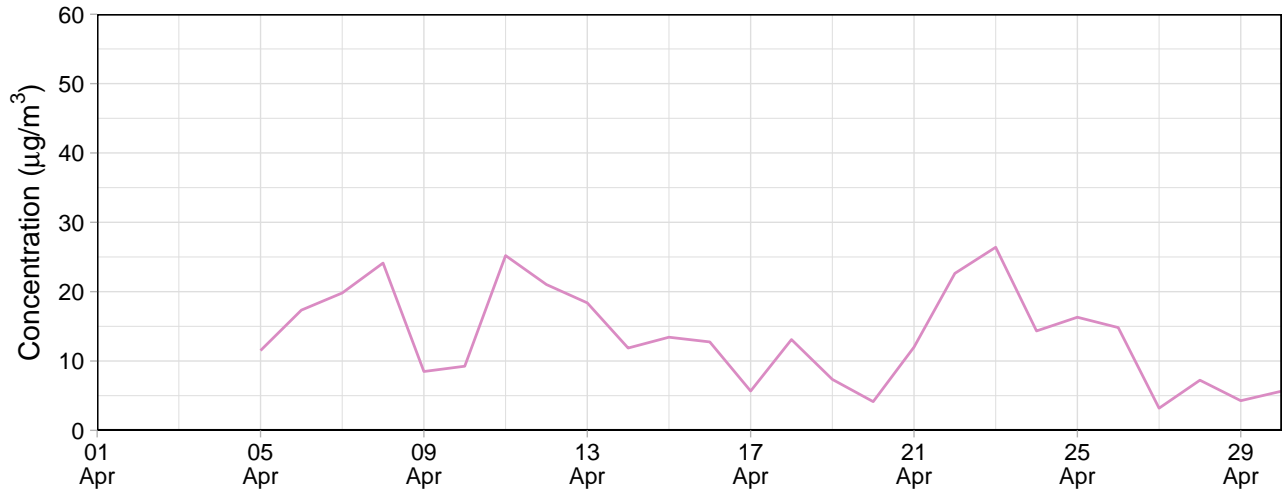
Internal Monitors

Table 2: Summary of 24-hour average data collected at internal monitors ($\mu\text{g}/\text{m}^3$)

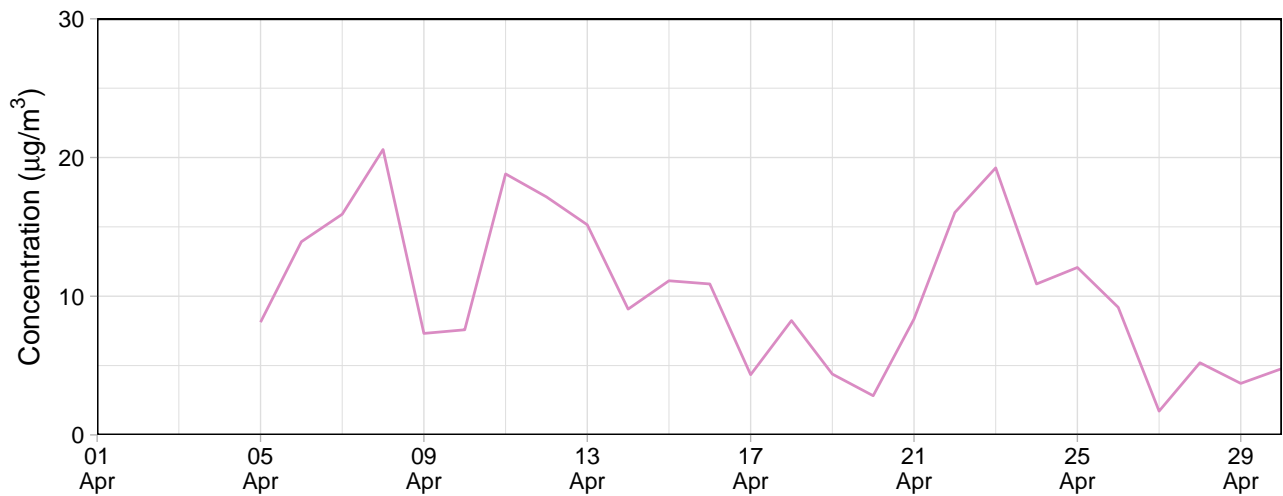
Site	PM ₁₀				PM _{2.5}			
	Min	Avg	Max	Capture (%)	Min	Avg	Max	Capture (%)
Southern Grounds	2.3	7.7	17.9	80.0	2.1	7.0	17.2	80.0
Eastern Grounds	5.3	12.2	22.2	73.3	3.6	9.3	19.1	73.3
Block 9	1.4	7.0	14.0	100.0	1.0	5.9	13.0	100.0
Northern Grounds	3.2	14.1	31.5	90.0	1.7	10.7	22.2	90.0

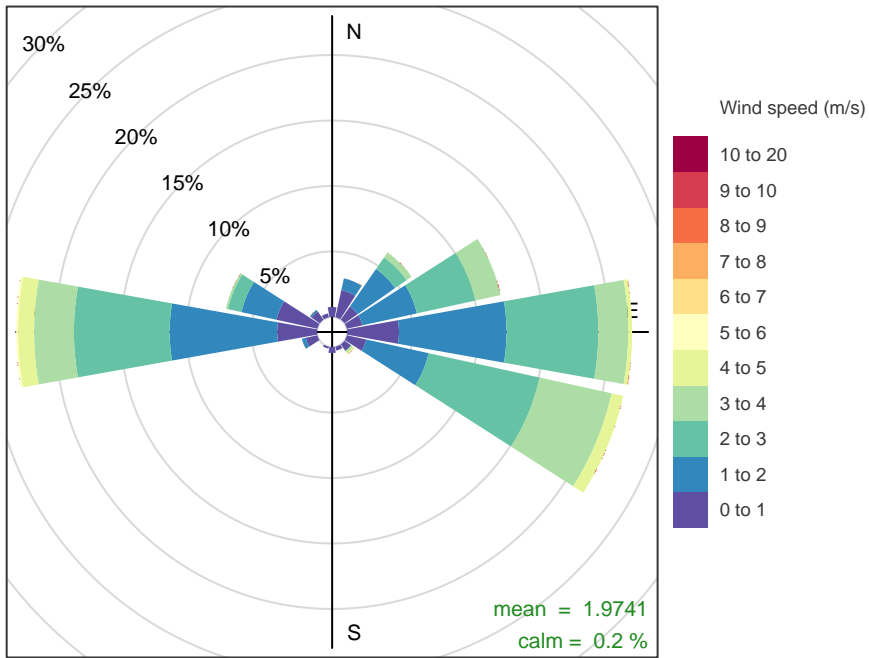
Northern Grounds

Northern Grounds – 24-hour average PM₁₀

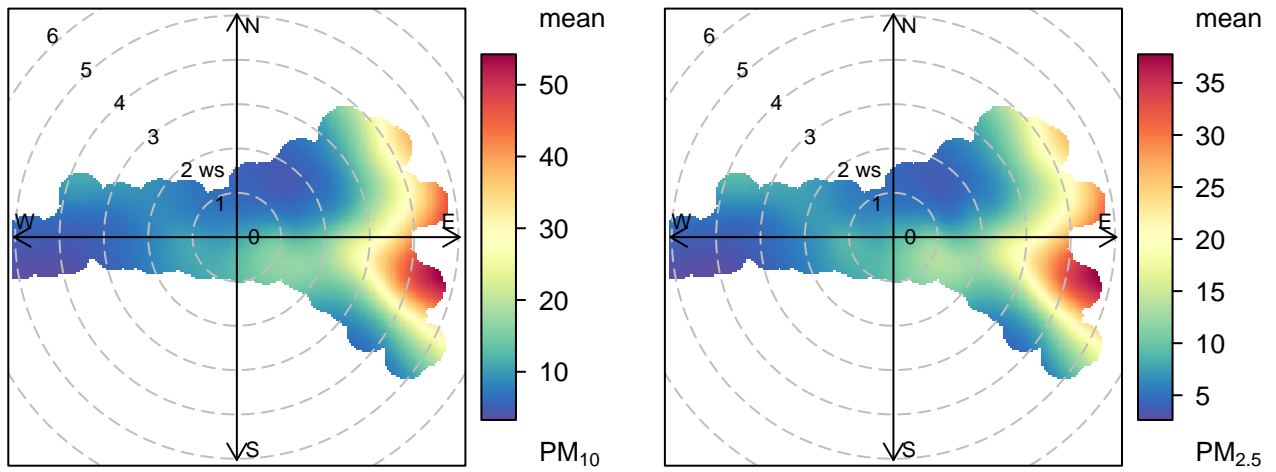


Northern Grounds – 24-hour average PM_{2.5}



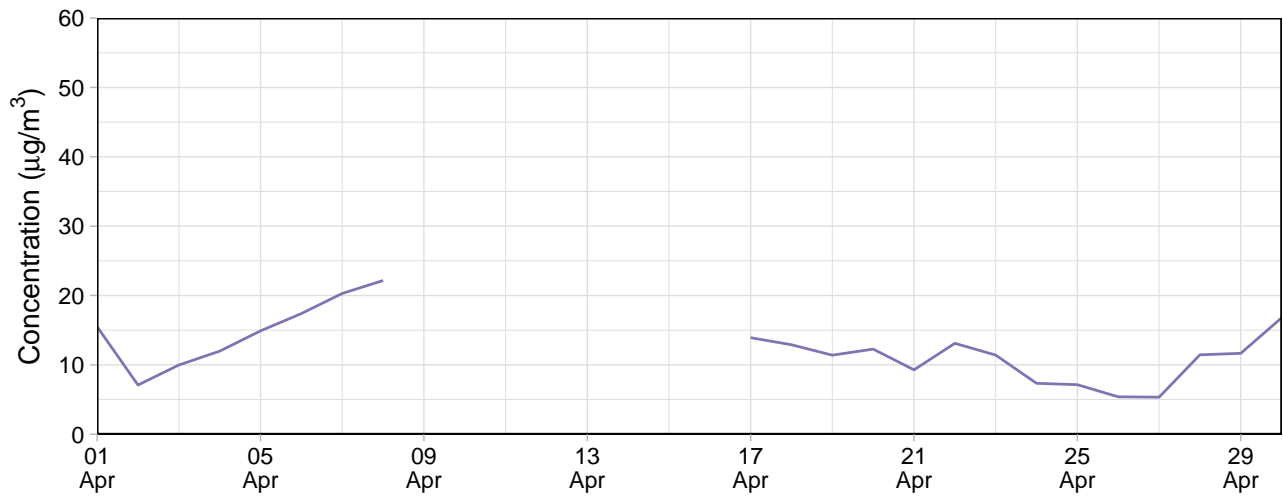


Frequency of counts by wind direction (%)

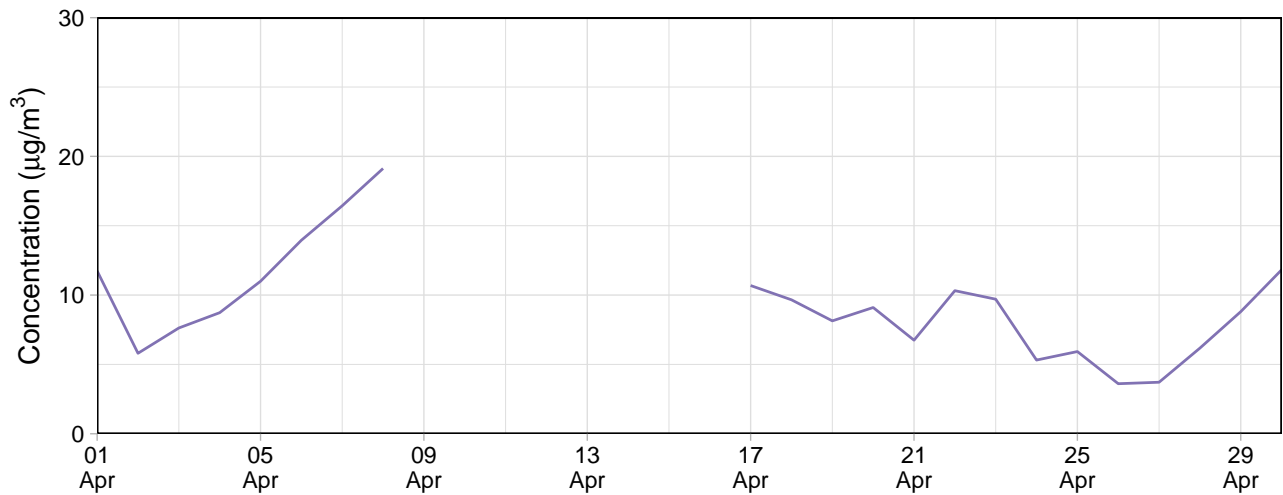


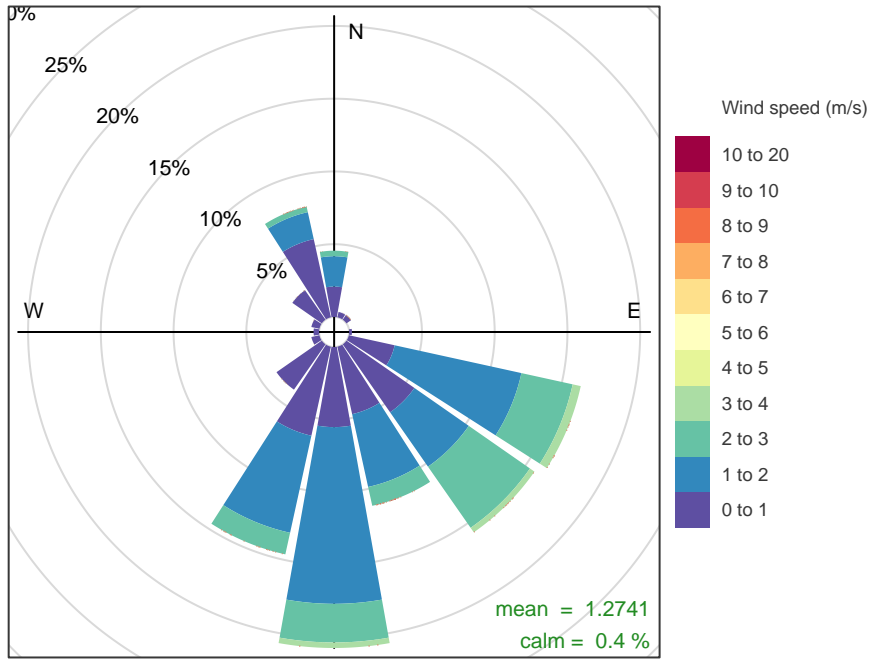
Eastern Grounds

Eastern Grounds – 24-hour average PM₁₀

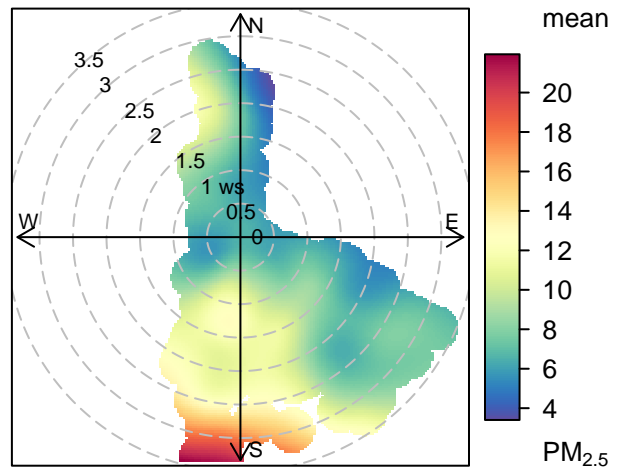
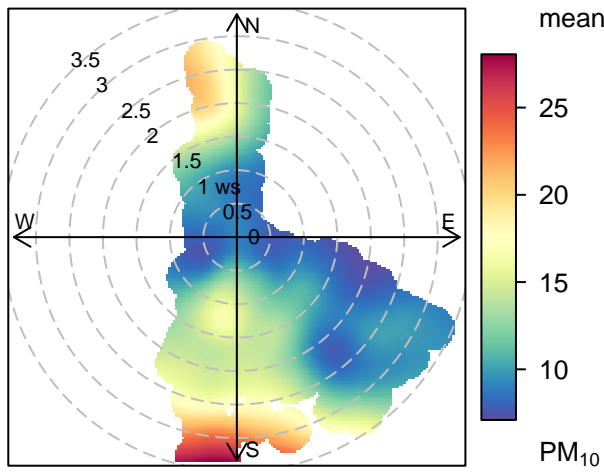


Eastern Grounds – 24-hour average PM_{2.5}



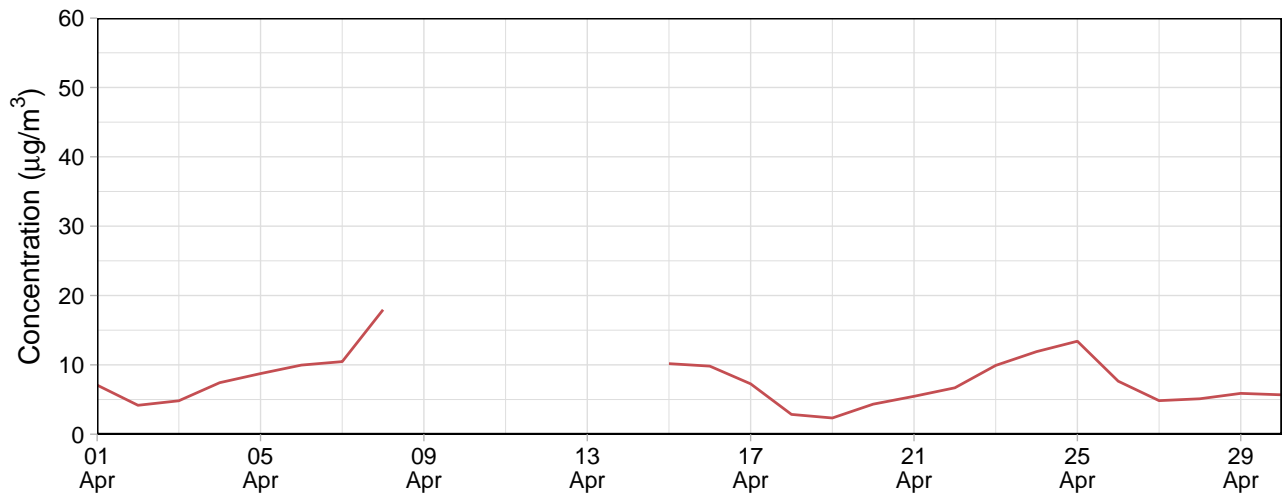


Frequency of counts by wind direction (%)

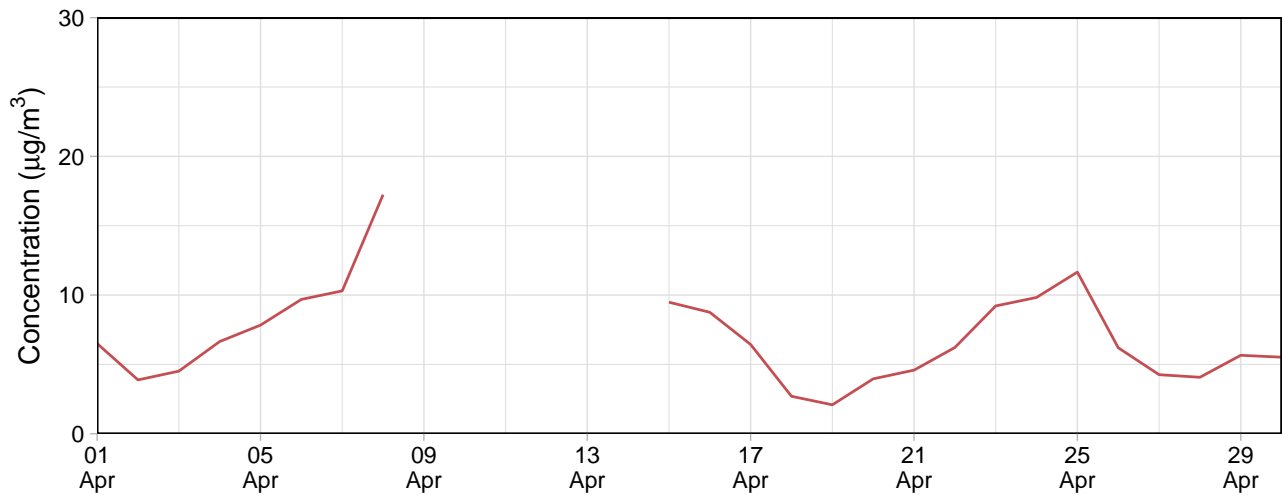


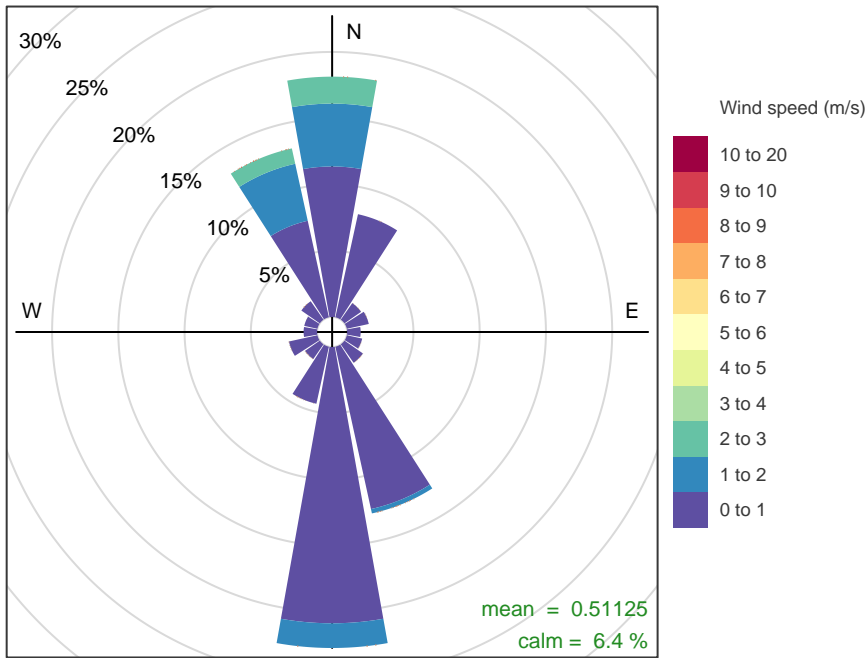
Southern Grounds

Southern Grounds – 24-hour average PM₁₀

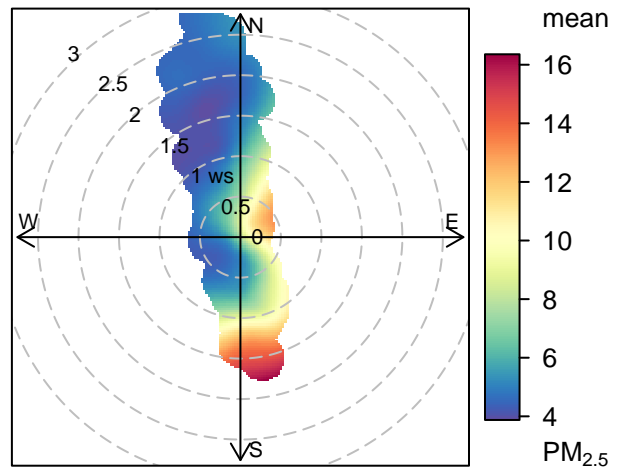
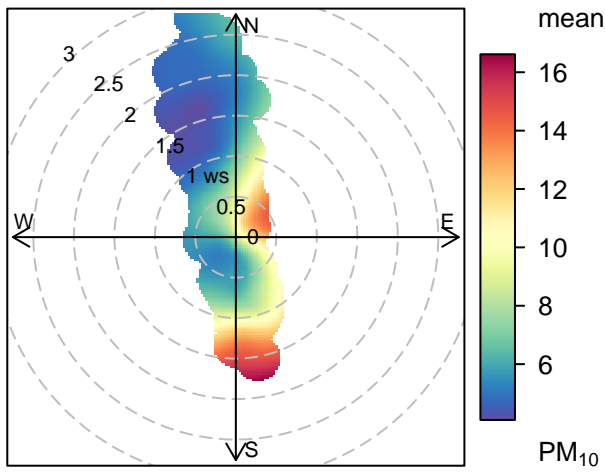


Southern Grounds – 24-hour average PM_{2.5}



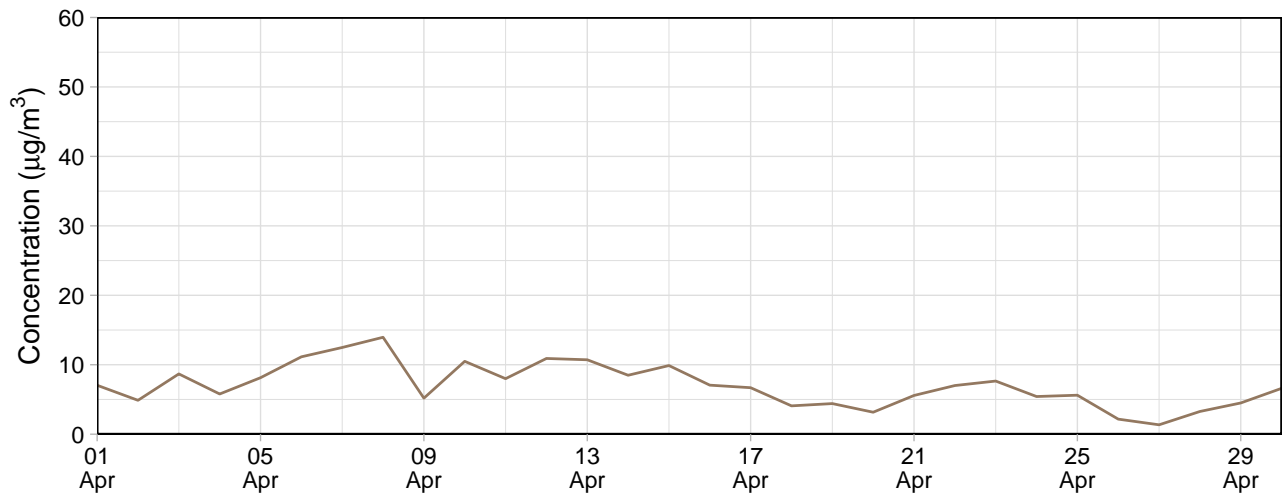


Frequency of counts by wind direction (%)

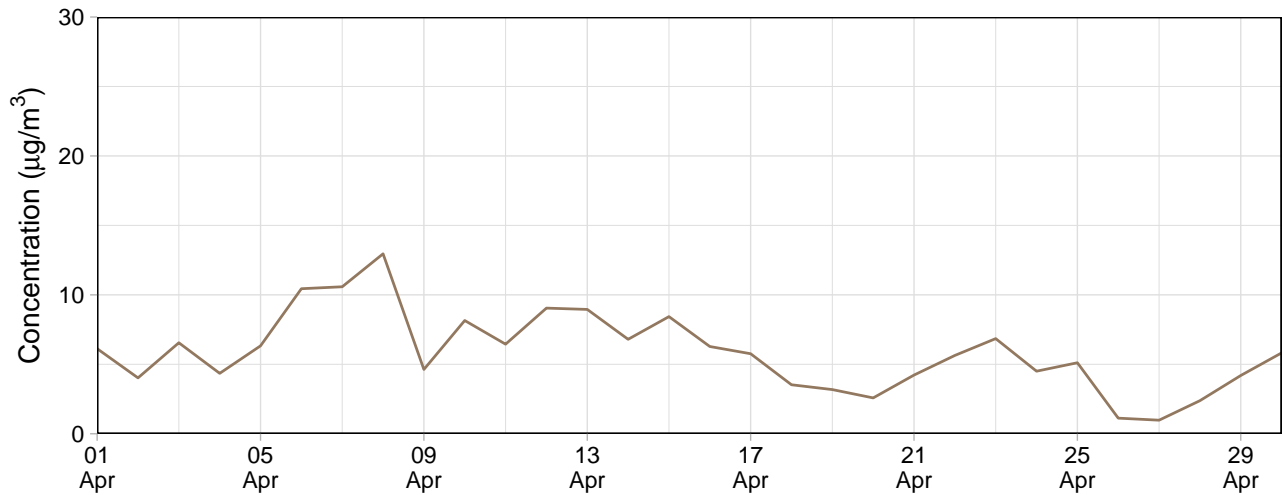


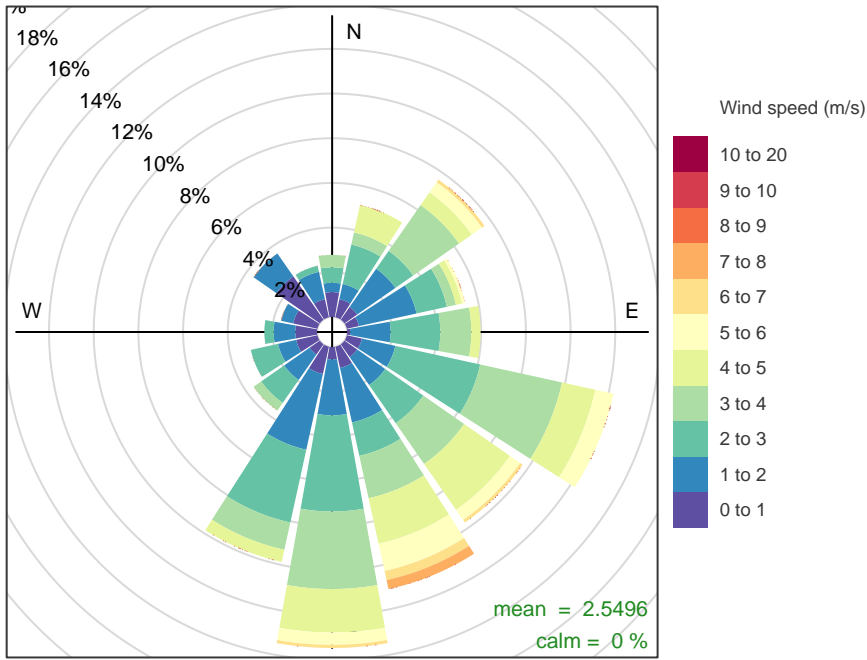
Block 9

Block 9 – 24-hour average PM₁₀

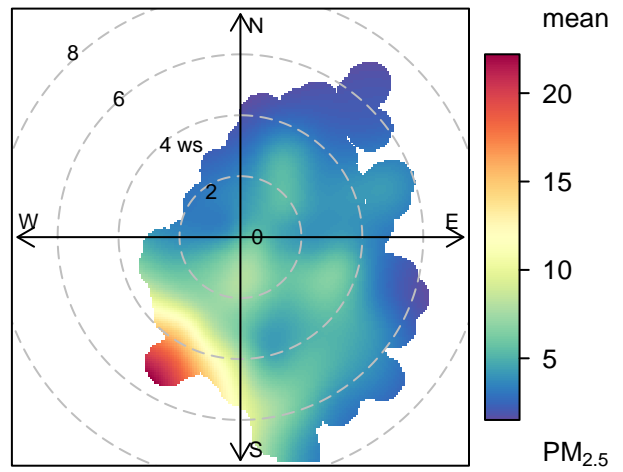
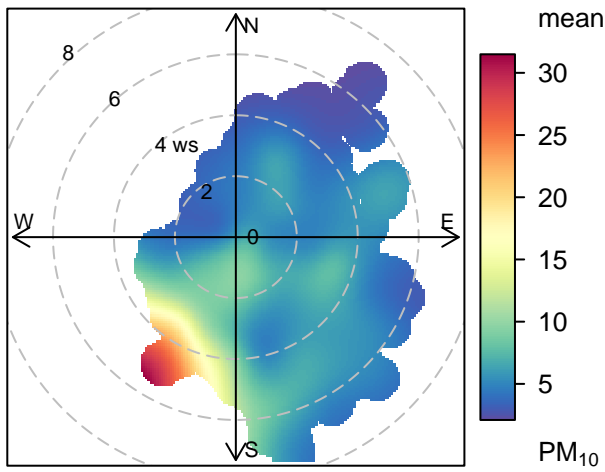


Block 9 – 24-hour average PM_{2.5}





Frequency of counts by wind direction (%)



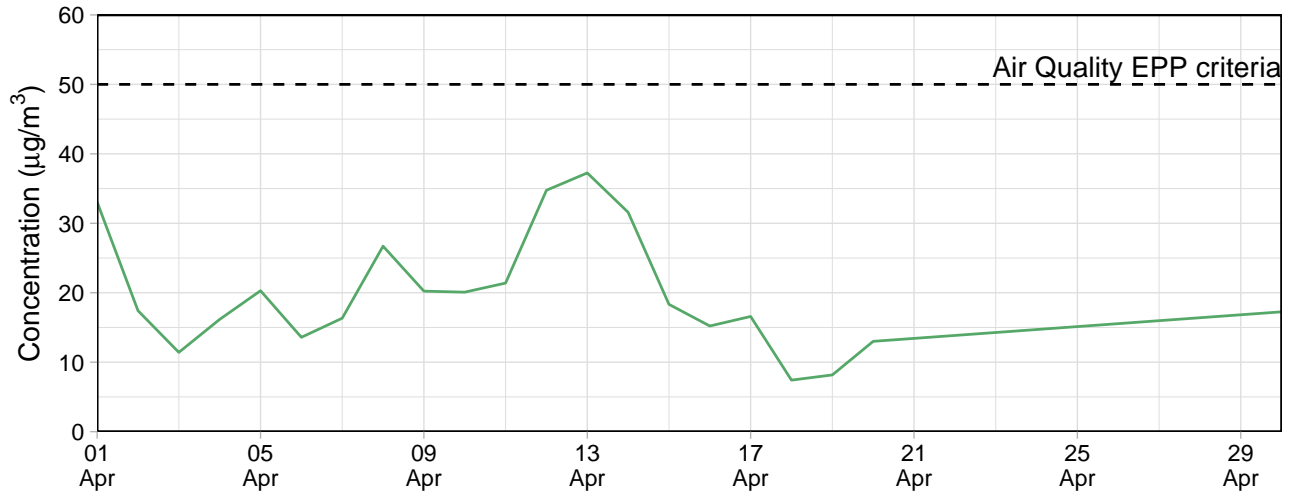
EPA Monitoring

Le Fevre 1

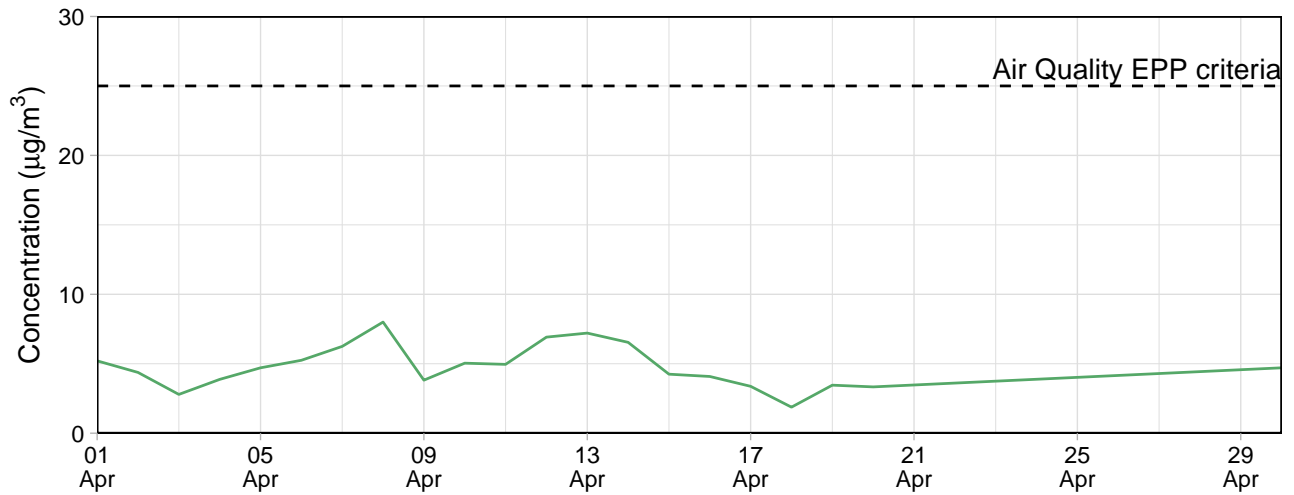
Table 3: Summary of 24-hour average data collected at EPA monitors ($\mu\text{g}/\text{m}^3$)

Site	PM ₁₀				PM _{2.5}			
	Min	Avg	Max	Capture (%)	Min	Avg	Max	Capture (%)
Le Fevre 1	7.4	19.8	37.2	100	1.9	4.8	8	100

Le Fevre 1 – 24-hour average PM₁₀



Le Fevre 1 – 24-hour average PM_{2.5}



Contents

Monitoring Summary (01 May, 2022 - 31 May, 2022)	1
Public Monitors	1
Internal Monitors	6
EPA Monitoring	14

Monitoring Summary (01 May, 2022 - 31 May, 2022)

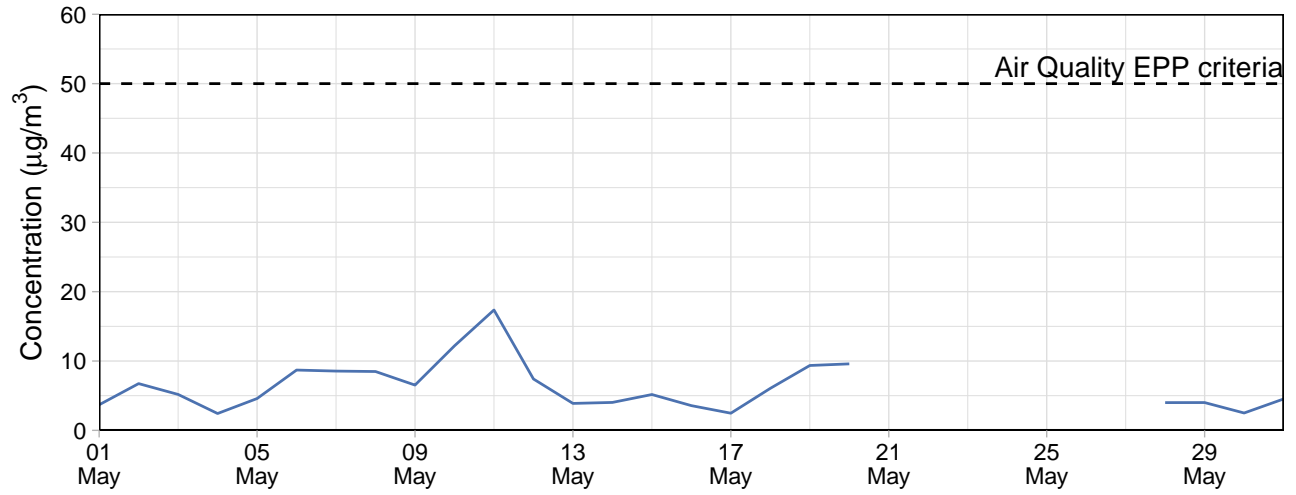
Public Monitors

Table 1: Summary of 24-hour average data collected at public monitors ($\mu\text{g}/\text{m}^3$)

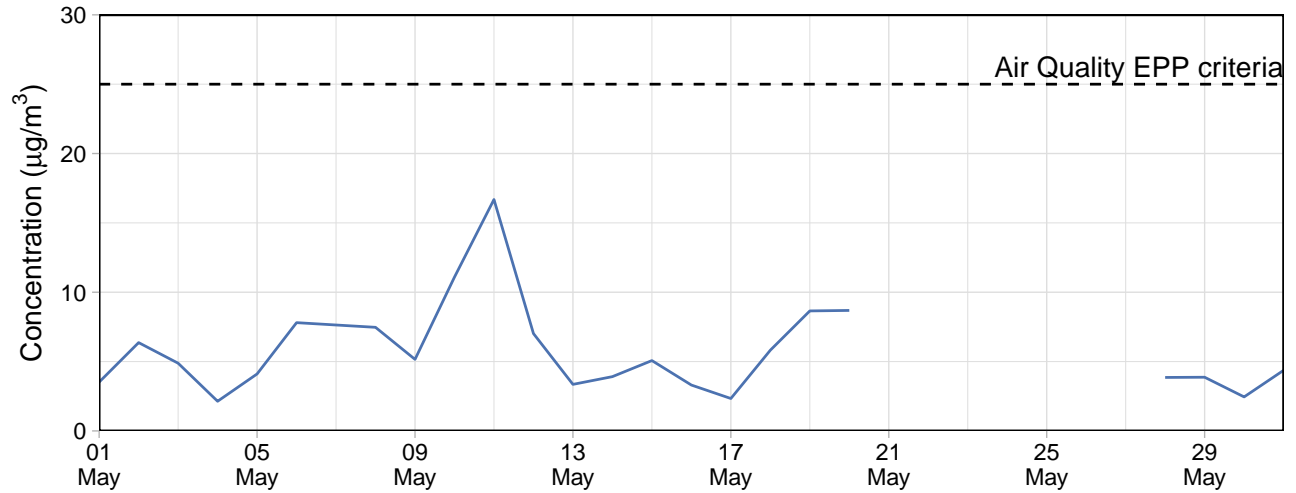
Site	PM ₁₀				PM _{2.5}			
	Min	Avg	Max	Capture (%)	Min	Avg	Max	Capture (%)
Community Park	2.4	6.3	17.4	77.4	2.1	5.8	16.7	77.4
Gunn Street	2.1	6.2	15.6	54.8	1.9	5.8	15.0	54.8

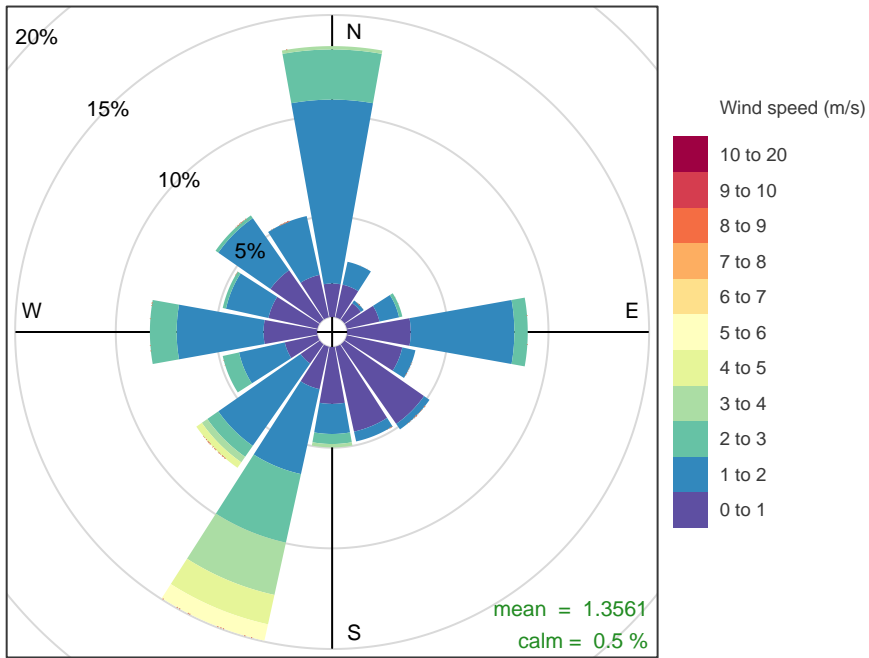
Community Park

Community Park – 24-hour average PM₁₀

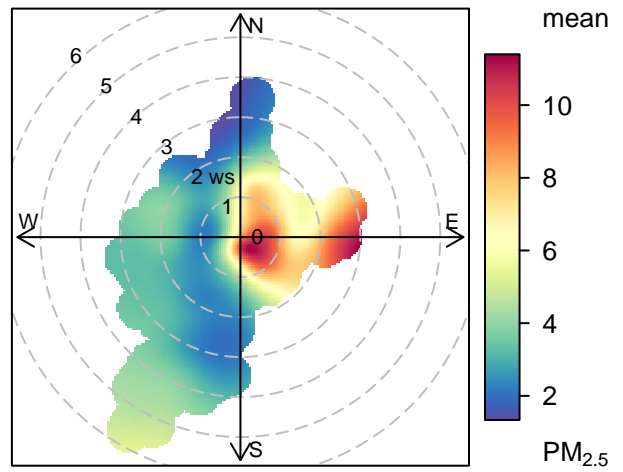
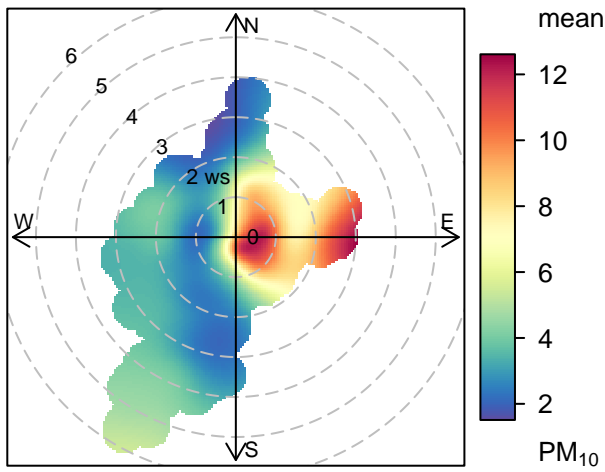


Community Park – 24-hour average PM_{2.5}

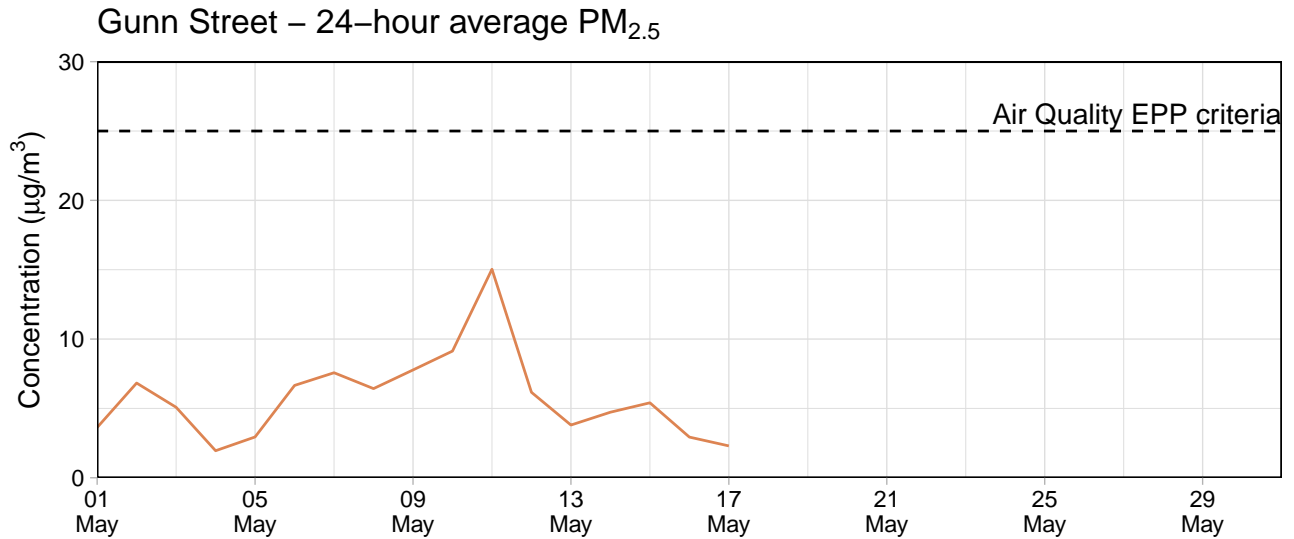
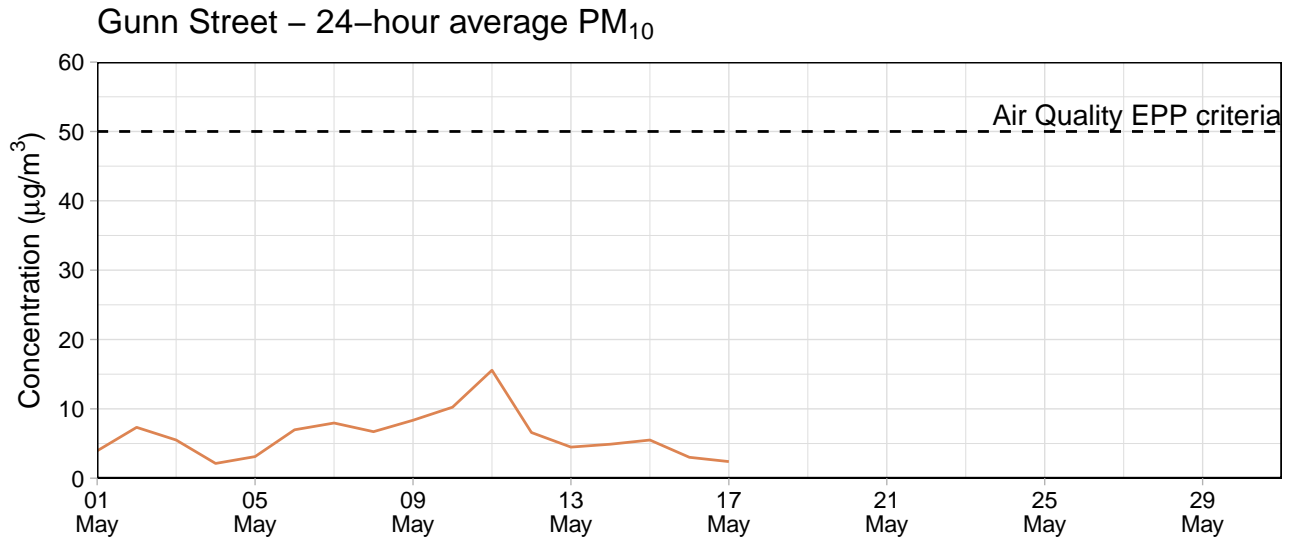


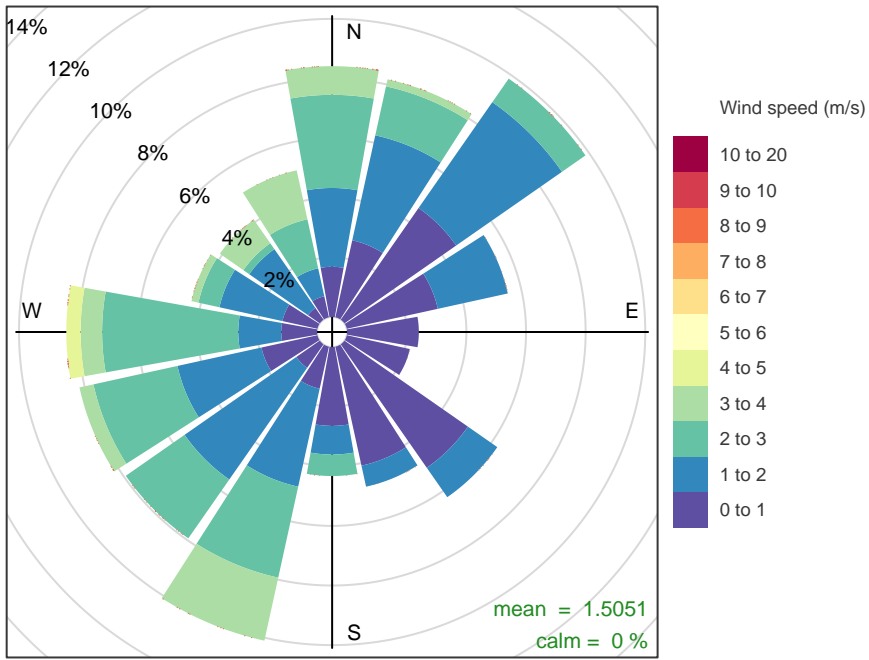


Frequency of counts by wind direction (%)

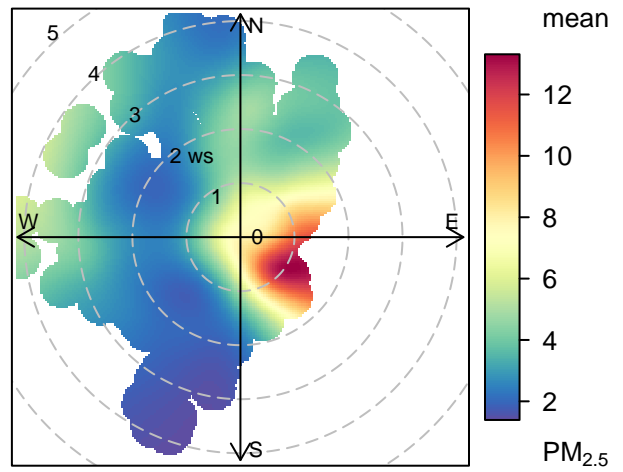
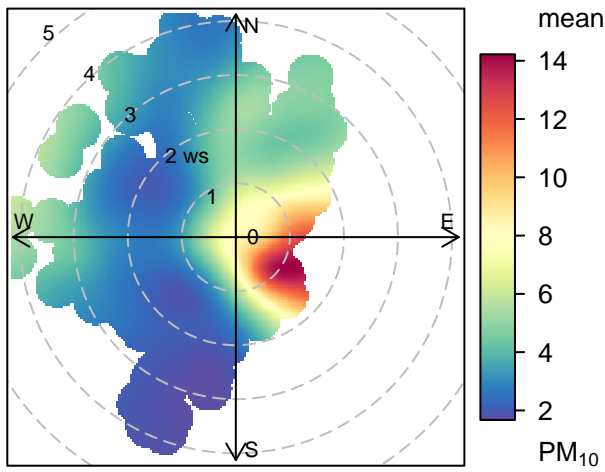


Gunn Street





Frequency of counts by wind direction (%)



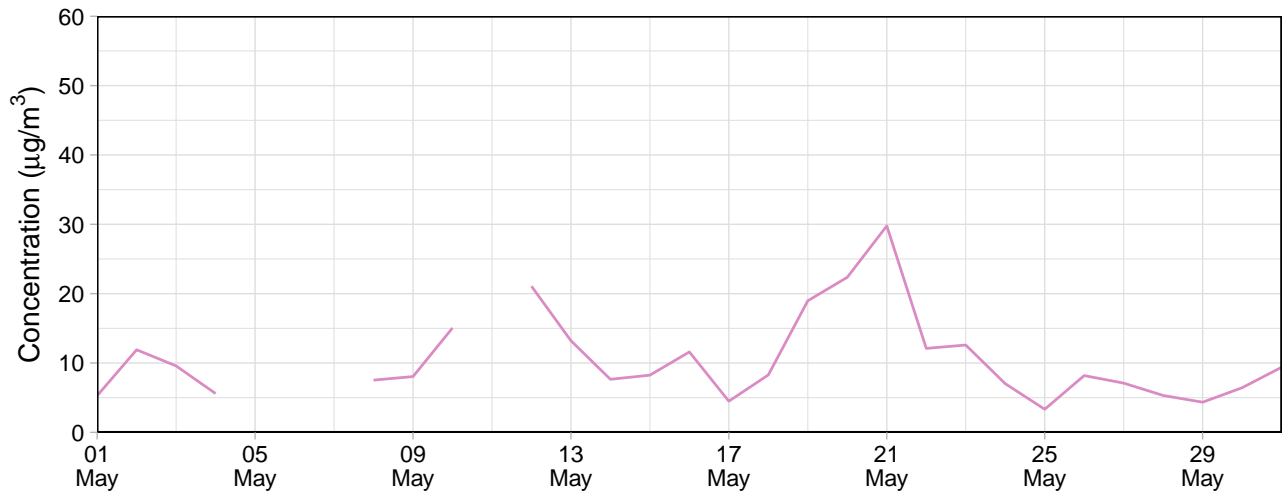
Internal Monitors

Table 2: Summary of 24-hour average data collected at internal monitors ($\mu\text{g}/\text{m}^3$)

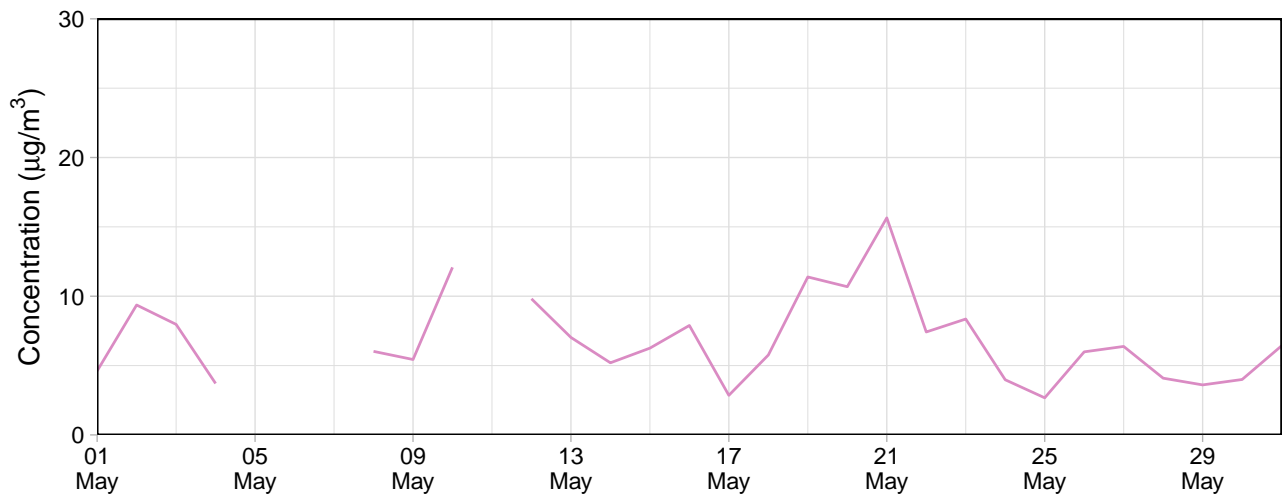
Site	PM ₁₀				PM _{2.5}			
	Min	Avg	Max	Capture (%)	Min	Avg	Max	Capture (%)
Southern Grounds	3.4	8.4	20.7	96.8	3.2	7.7	19.2	96.8
Eastern Grounds	5.7	12.0	23.7	35.5	4.2	9.4	20.3	35.5
Block 9	2.5	6.0	20.5	90.3	2.1	5.2	18.8	90.3
Northern Grounds	3.3	10.5	29.8	87.1	2.7	6.8	15.6	87.1

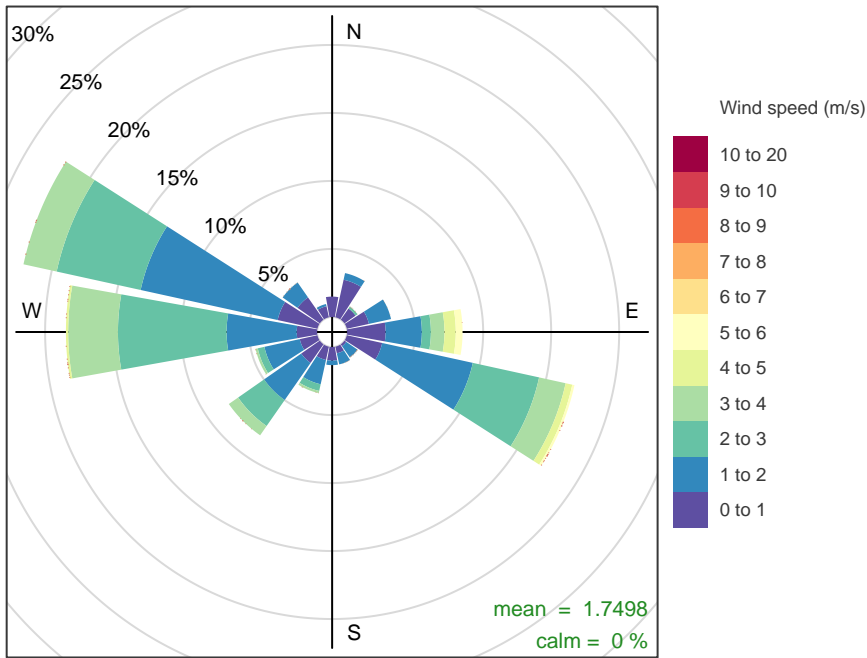
Northern Grounds

Northern Grounds – 24-hour average PM₁₀

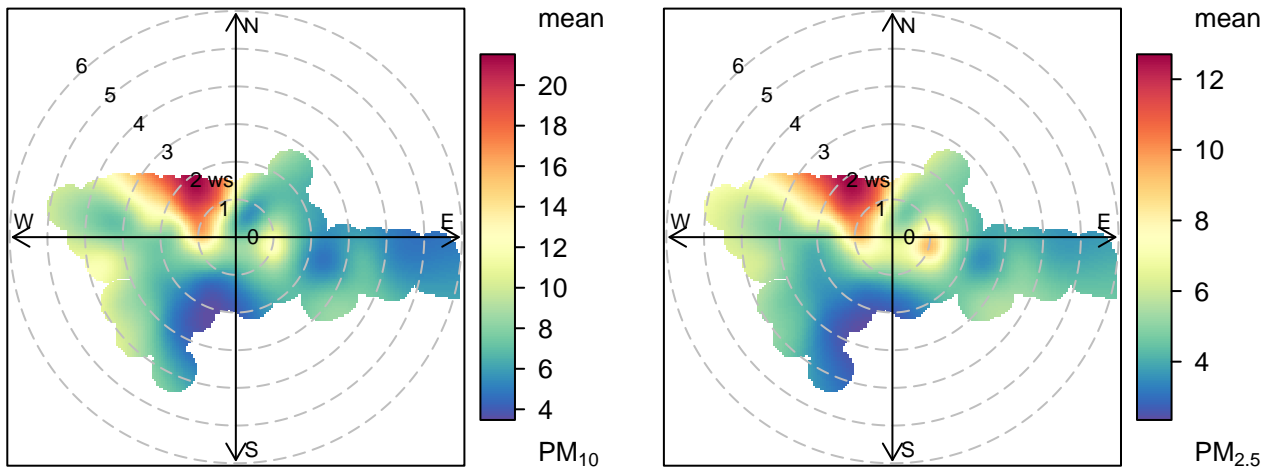


Northern Grounds – 24-hour average PM_{2.5}



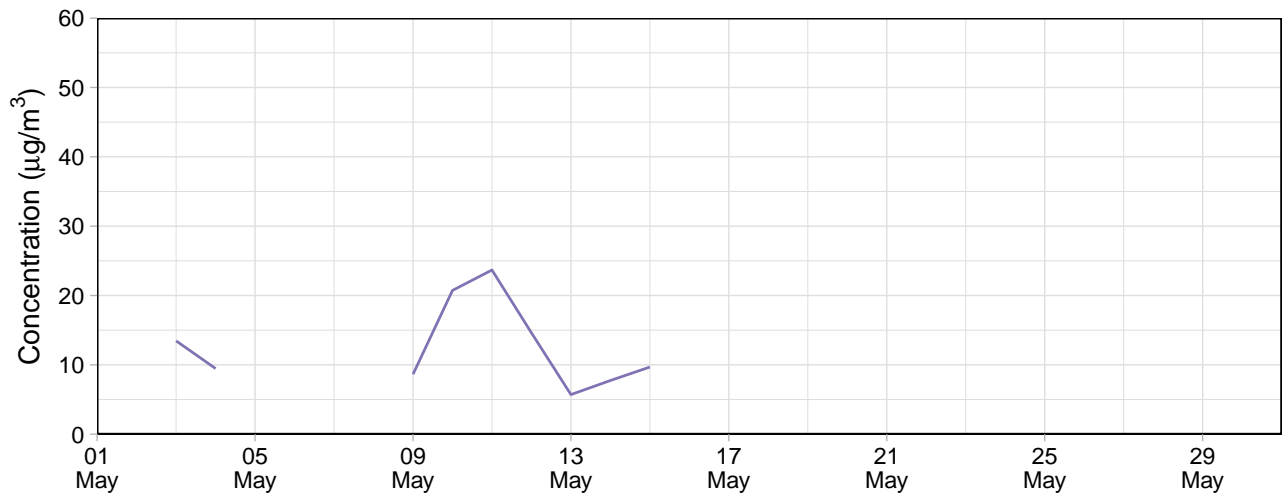


Frequency of counts by wind direction (%)

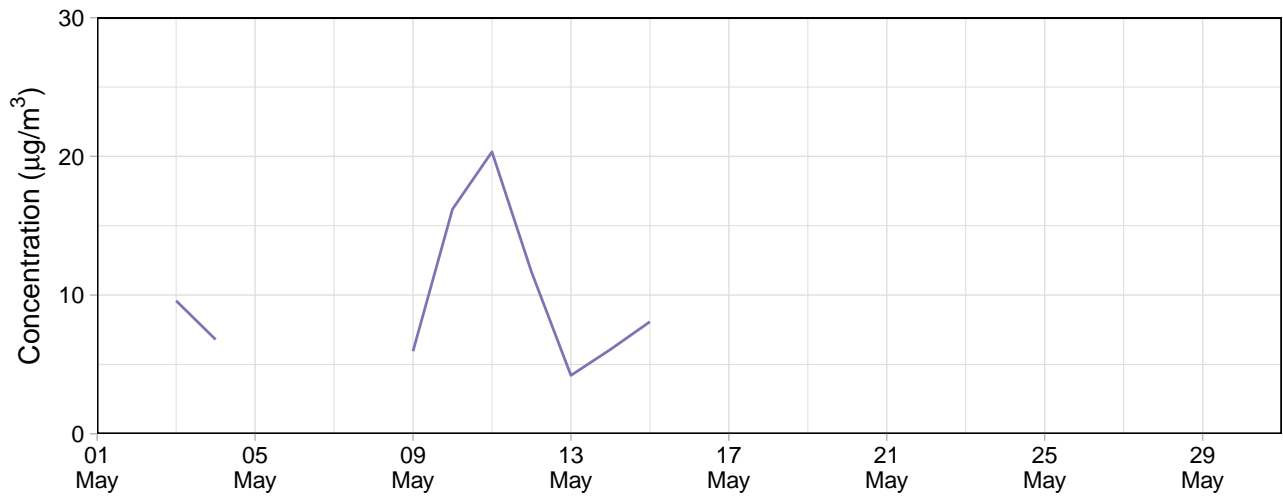


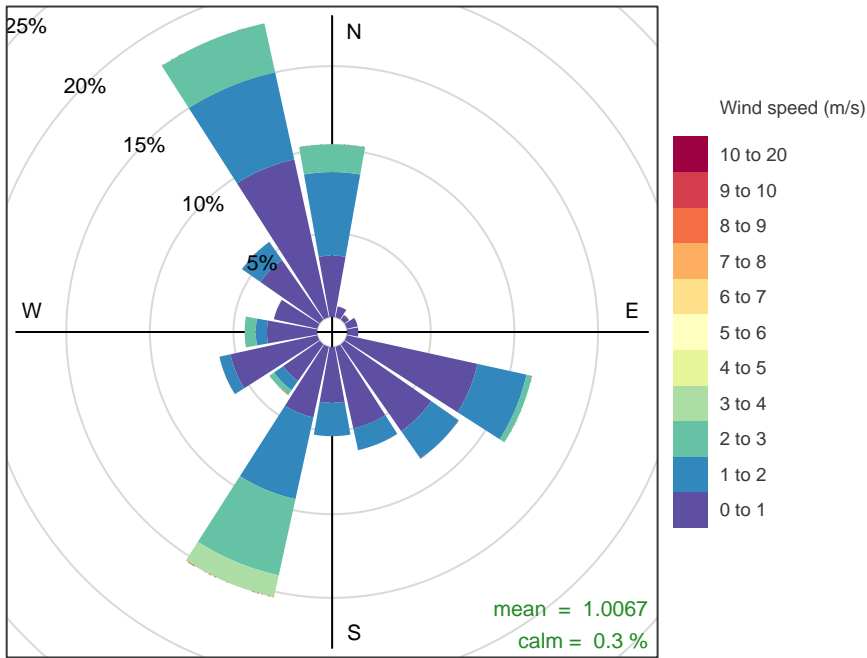
Eastern Grounds

Eastern Grounds – 24-hour average PM₁₀

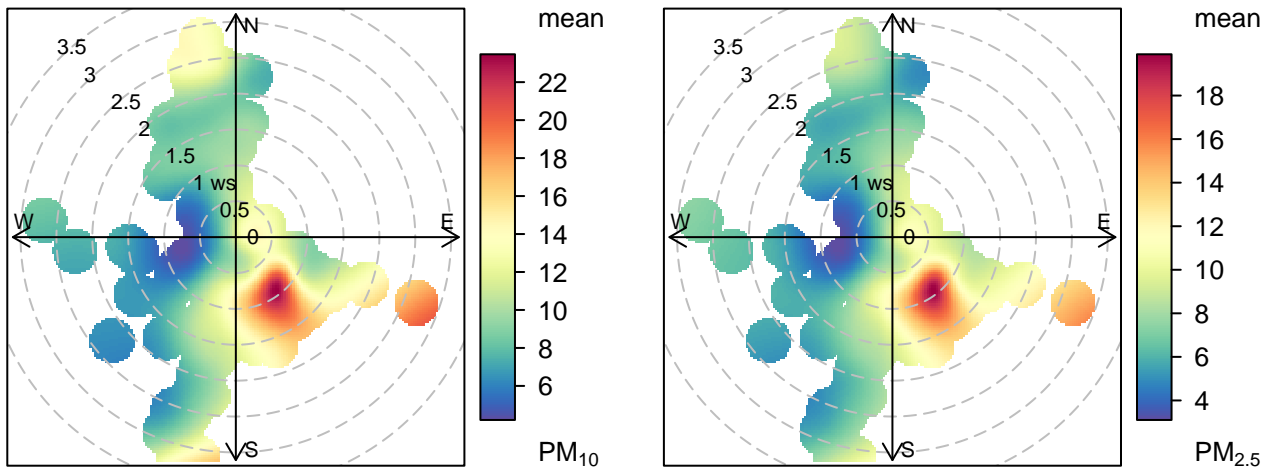


Eastern Grounds – 24-hour average PM_{2.5}



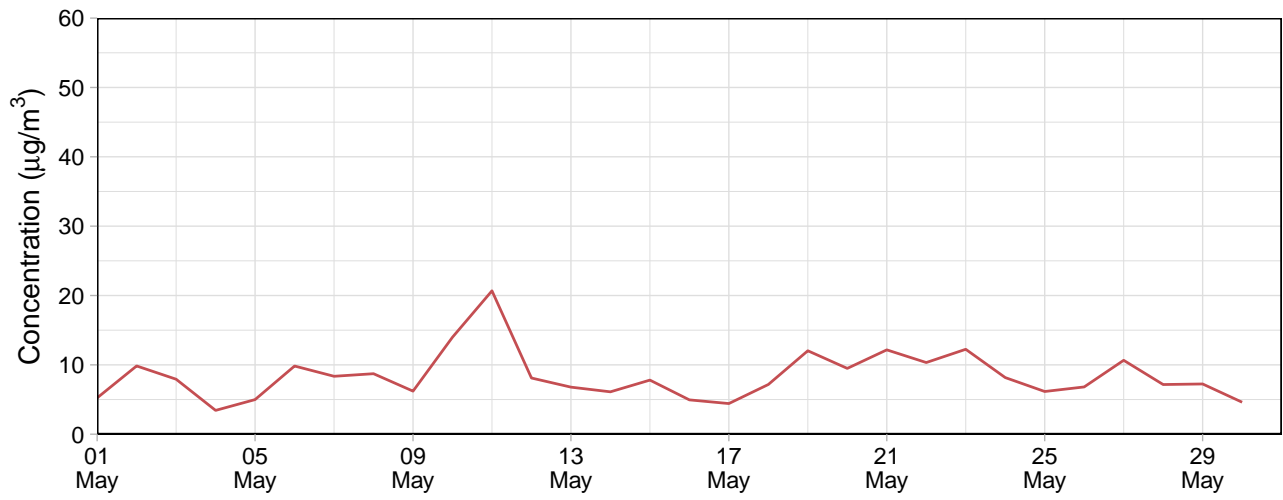


Frequency of counts by wind direction (%)

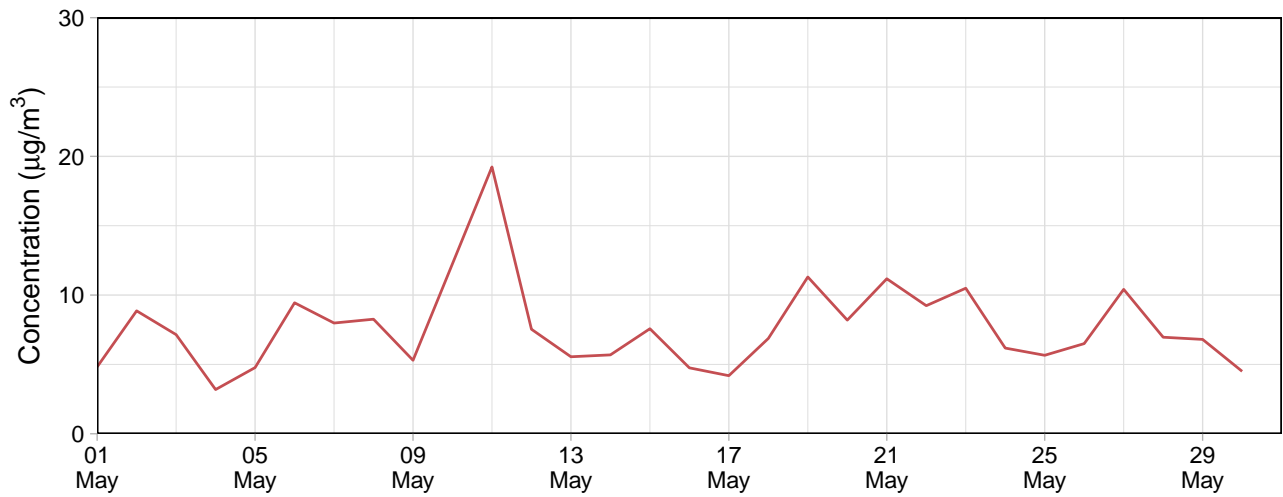


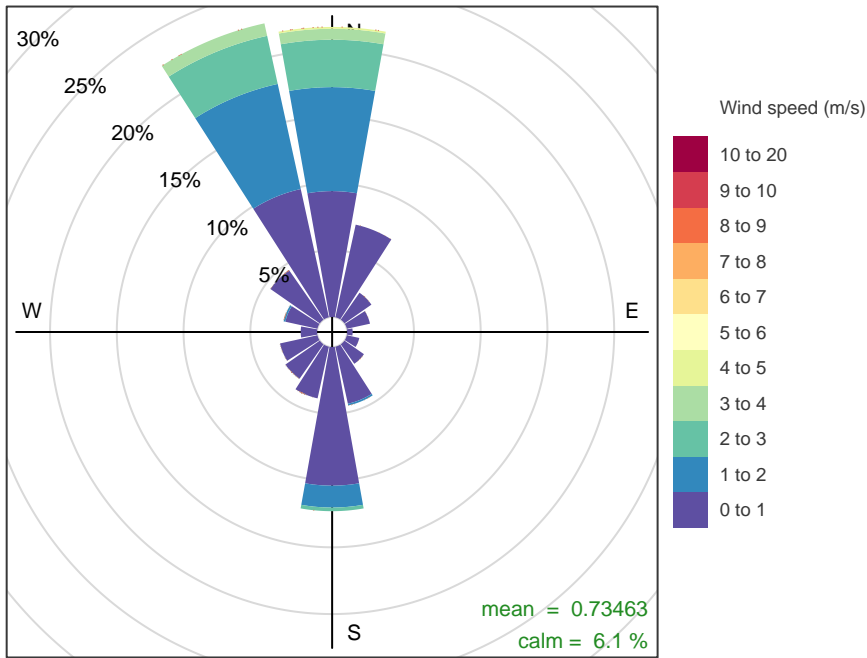
Southern Grounds

Southern Grounds – 24-hour average PM₁₀

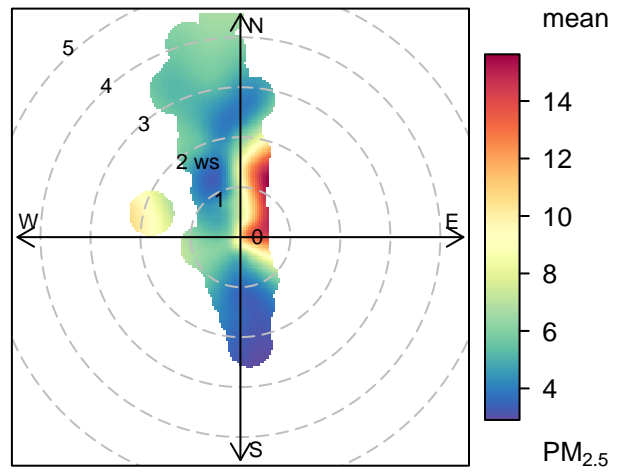
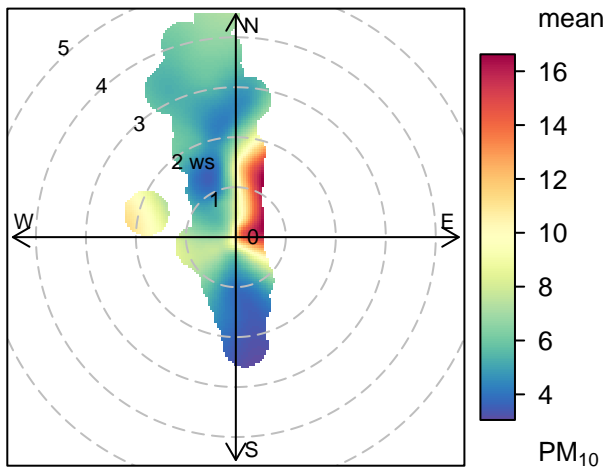


Southern Grounds – 24-hour average PM_{2.5}



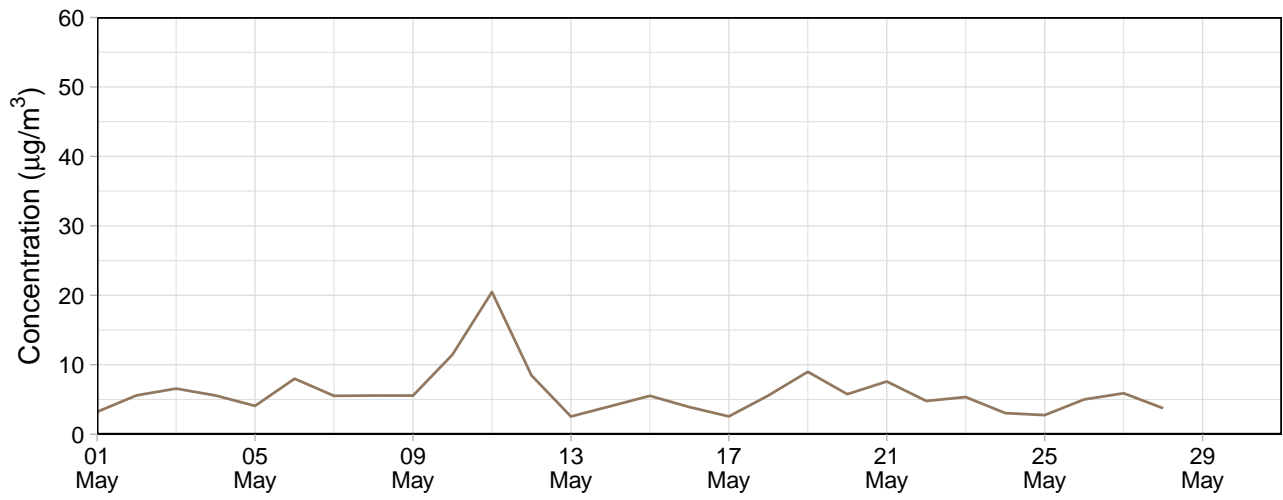


Frequency of counts by wind direction (%)

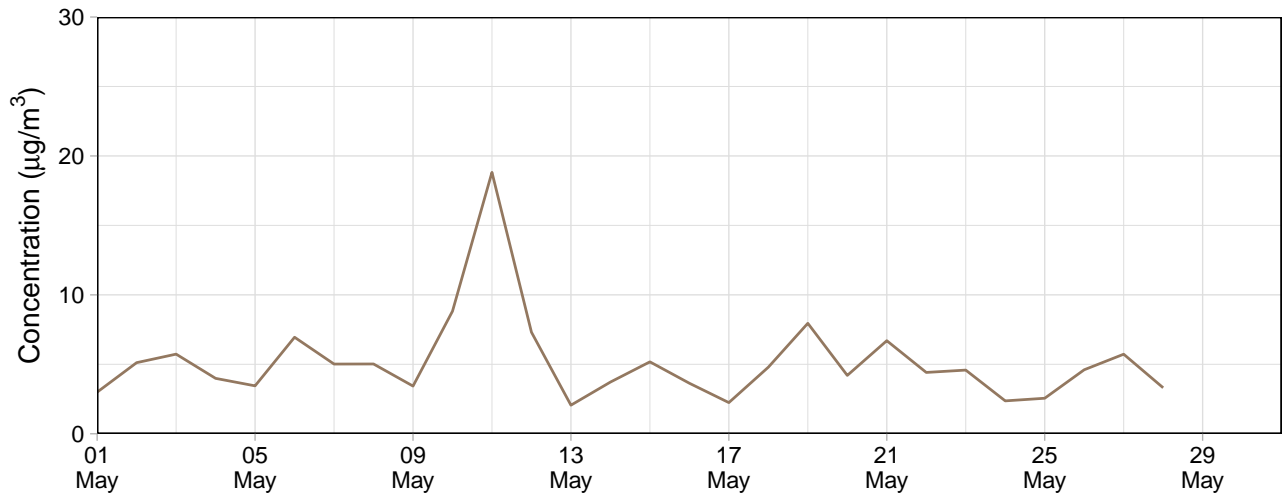


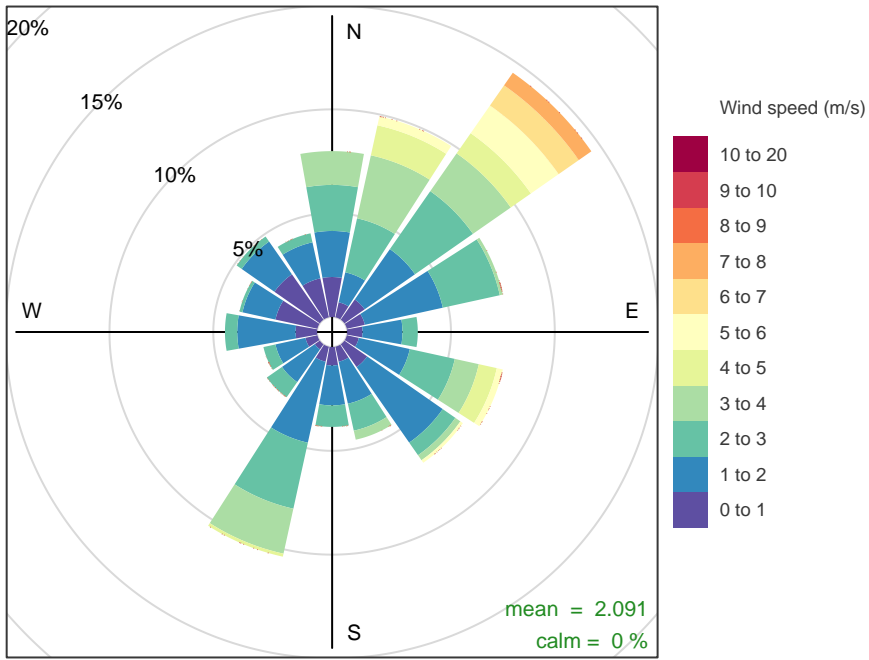
Block 9

Block 9 – 24-hour average PM₁₀

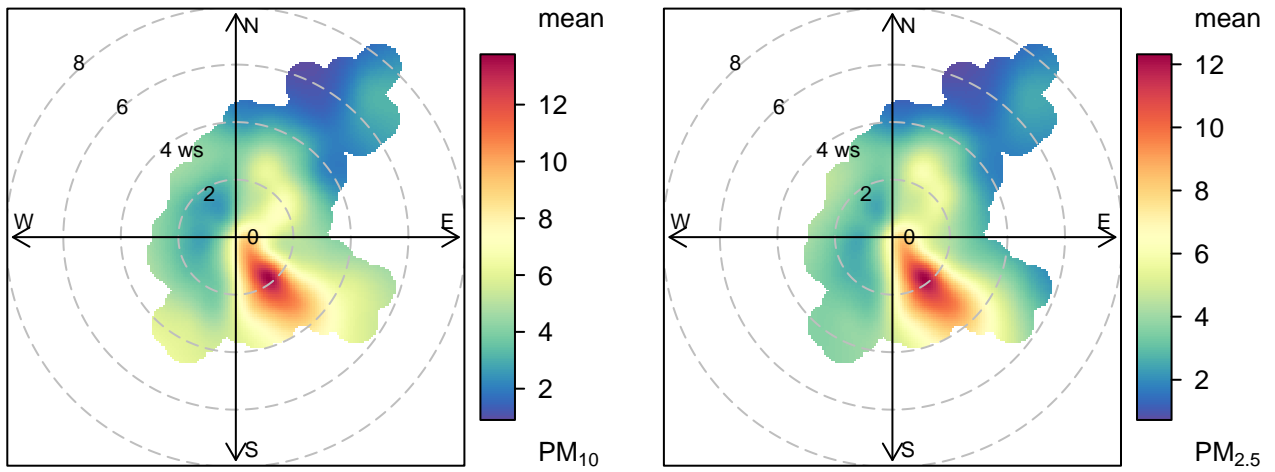


Block 9 – 24-hour average PM_{2.5}





Frequency of counts by wind direction (%)



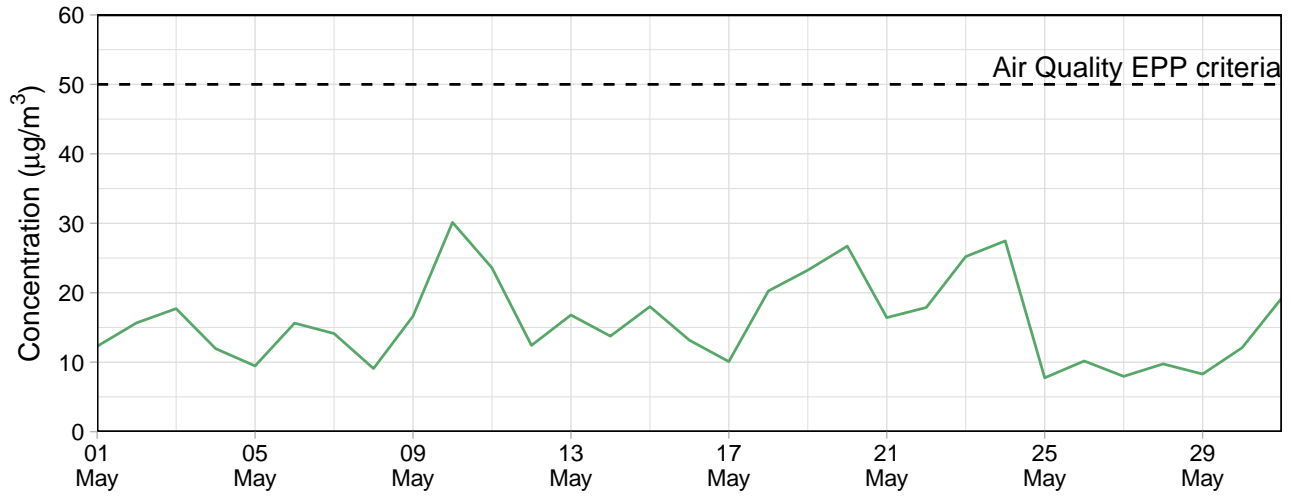
EPA Monitoring

Le Fevre 1

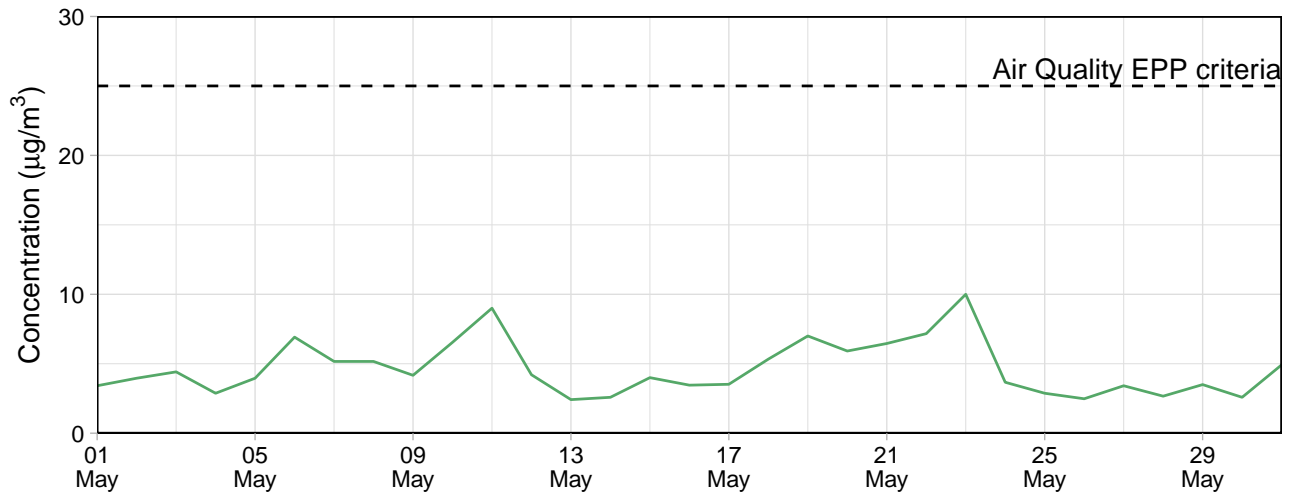
Table 3: Summary of 24-hour average data collected at EPA monitors ($\mu\text{g}/\text{m}^3$)

Site	PM ₁₀				PM _{2.5}			
	Min	Avg	Max	Capture (%)	Min	Avg	Max	Capture (%)
Le Fevre 1	7.8	15.9	30.1	100	2.4	4.6	10	100

Le Fevre 1 – 24-hour average PM₁₀



Le Fevre 1 – 24-hour average PM_{2.5}



Contents

Monitoring Summary (01 Jun, 2022 - 30 Jun, 2022)	1
Public Monitors	1
Internal Monitors	6
EPA Monitoring	12

Monitoring Summary (01 Jun, 2022 - 30 Jun, 2022)

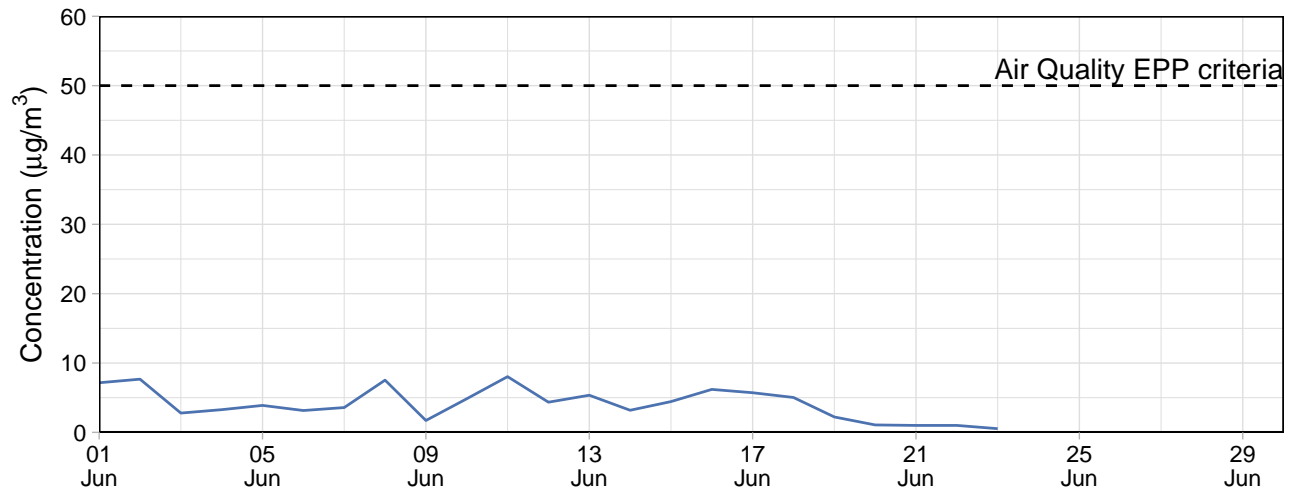
Public Monitors

Table 1: Summary of 24-hour average data collected at public monitors ($\mu\text{g}/\text{m}^3$)

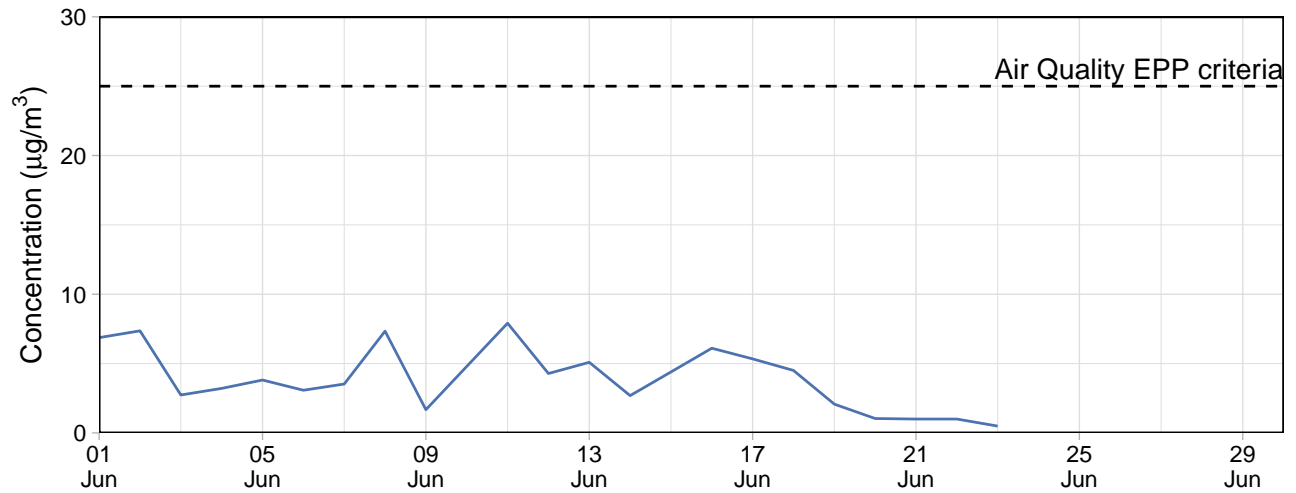
Site	PM ₁₀				PM _{2.5}			
	Min	Avg	Max	Capture (%)	Min	Avg	Max	Capture (%)
Community Park	-0.5	3.1	8.0	100.0	-1.1	2.9	7.9	100.0
Gunn Street	1.7	5.1	15.3	66.7	1.6	4.6	10.1	66.7

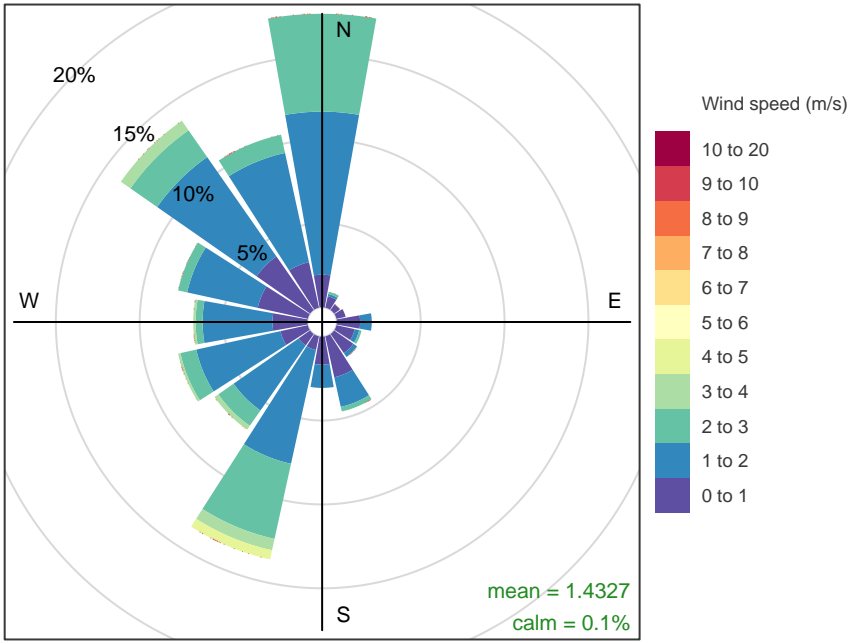
Community Park

Community Park – 24-hour average PM₁₀

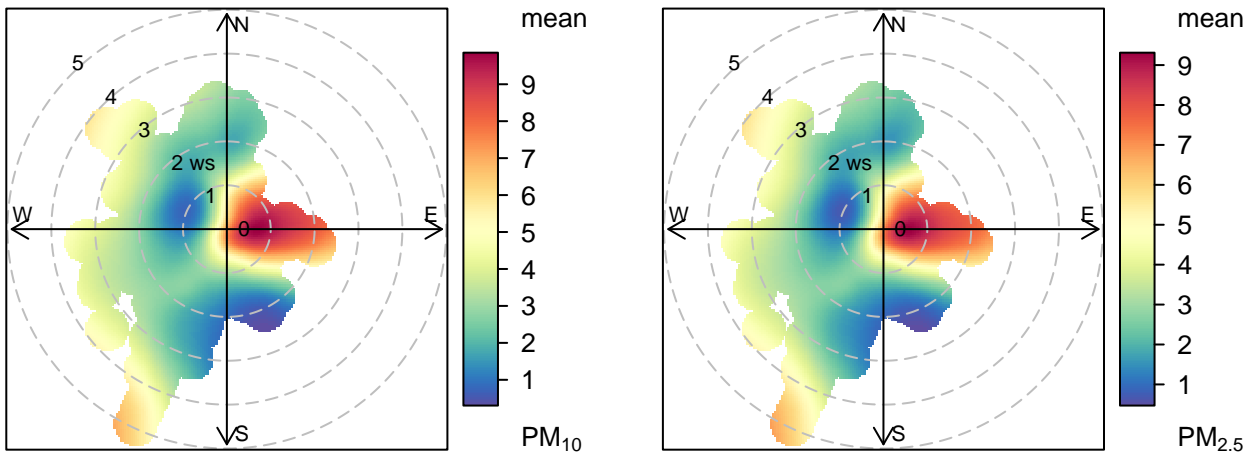


Community Park – 24-hour average PM_{2.5}

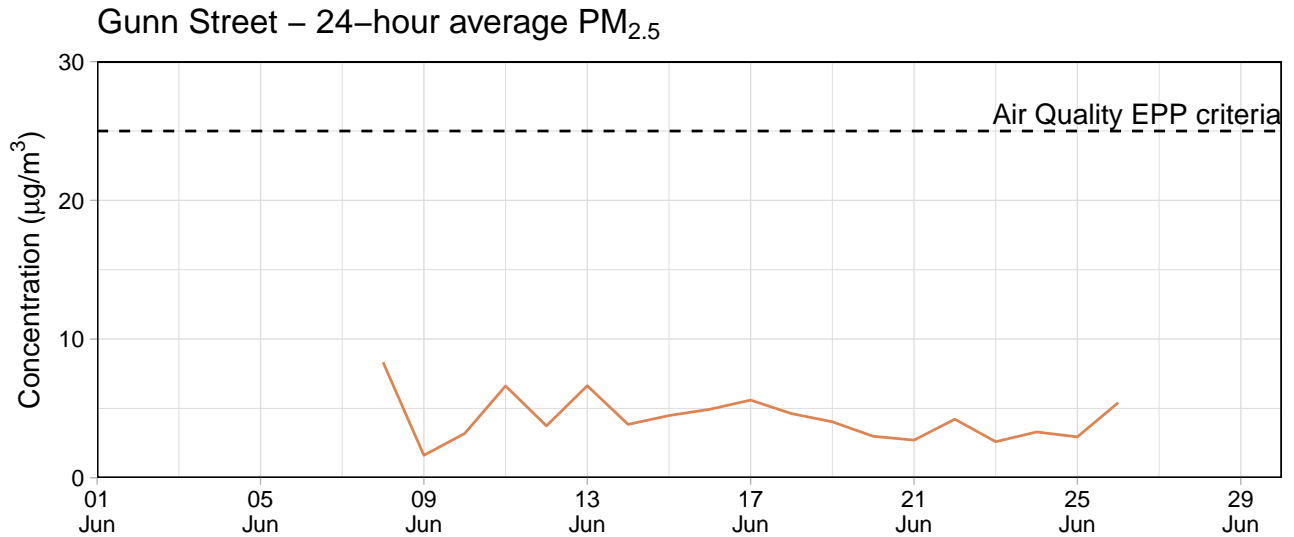
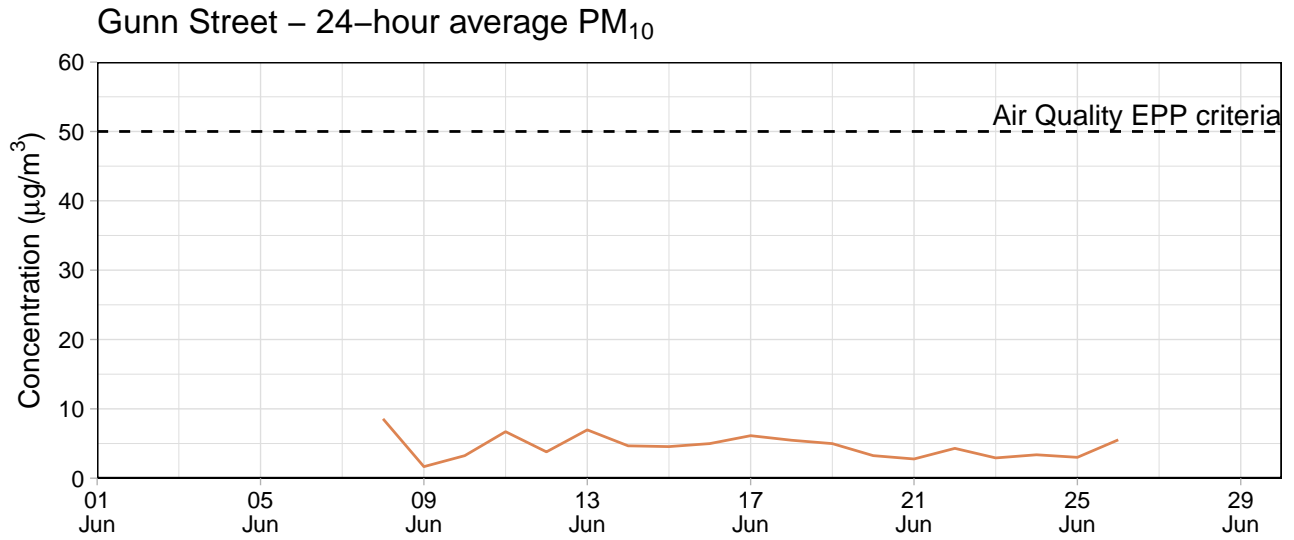


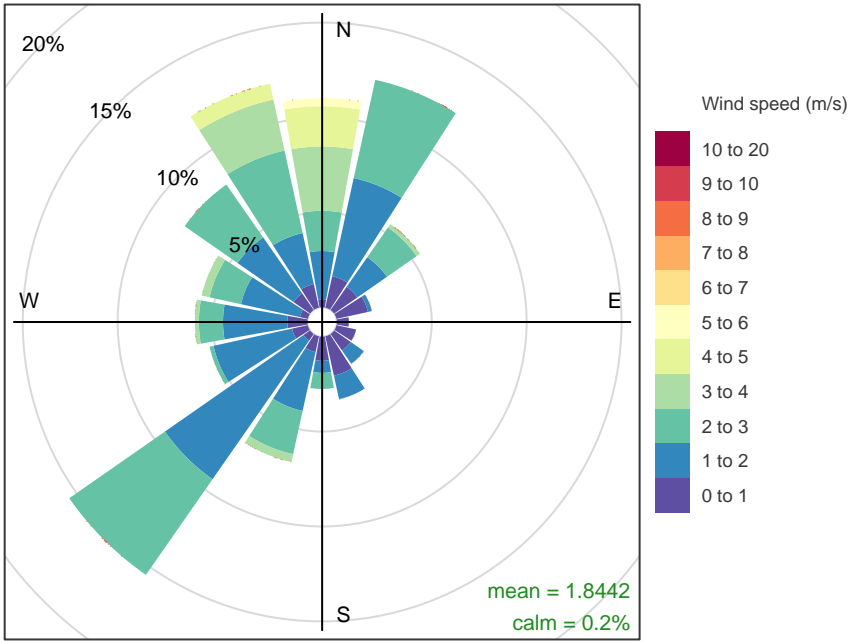


Frequency of counts by wind direction (%)

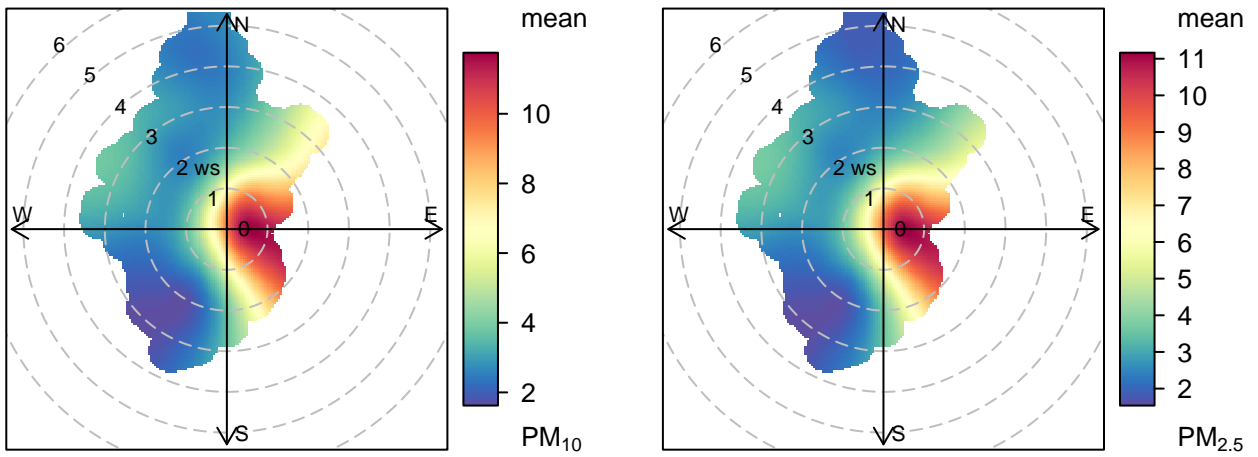


Gunn Street





Frequency of counts by wind direction (%)



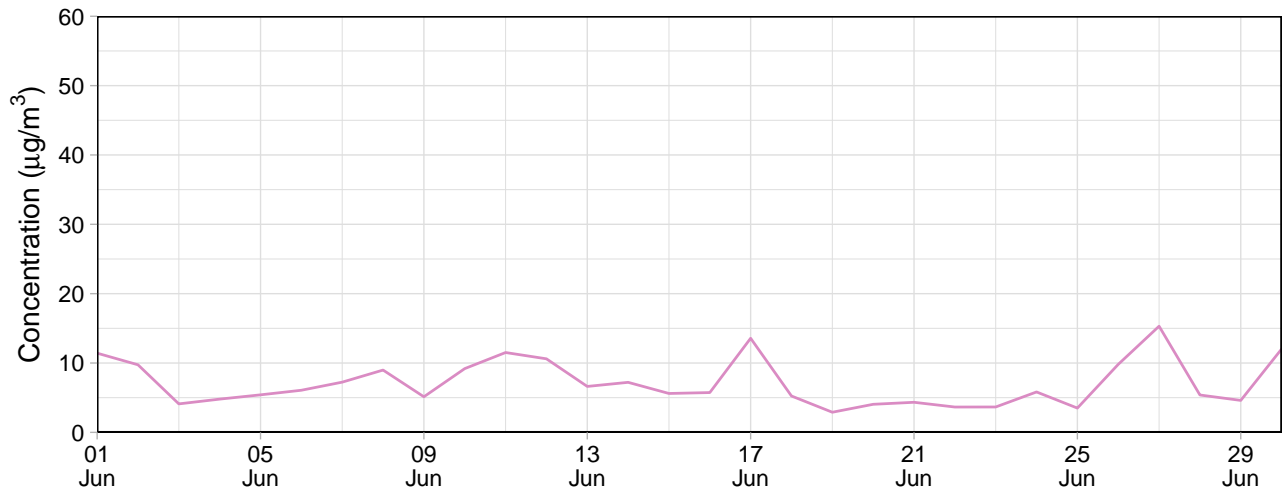
Internal Monitors

Table 2: Summary of 24-hour average data collected at internal monitors ($\mu\text{g}/\text{m}^3$)

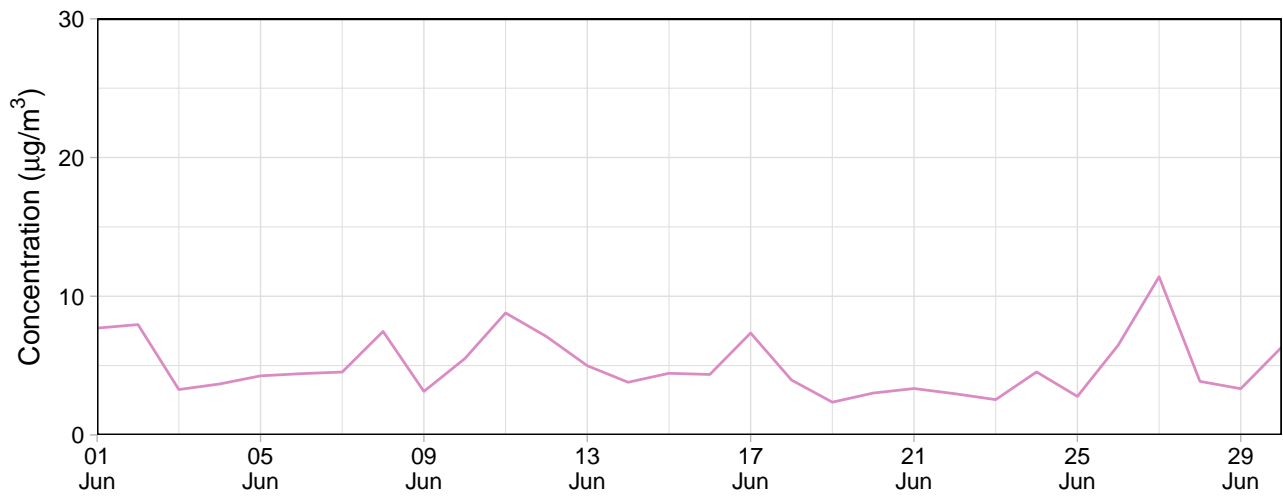
Site	PM ₁₀				PM _{2.5}			
	Min	Avg	Max	Capture (%)	Min	Avg	Max	Capture (%)
Southern Grounds	2.9	5.9	14.3	83.3	2.7	5.5	13.4	83.3
Eastern Grounds	2.3	2.3	2.3	3.3	2.3	2.3	2.3	3.3
Block 9	2.1	4.5	10.5	63.3	1.9	4.0	10.0	63.3
Northern Grounds	2.9	7.1	15.3	100.0	2.4	5.0	11.4	100.0

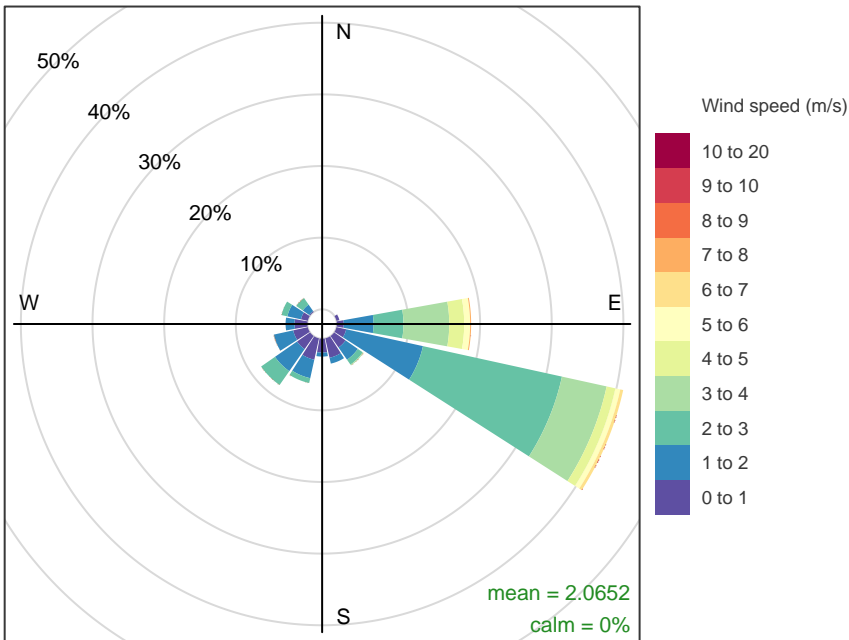
Northern Grounds

Northern Grounds – 24-hour average PM₁₀

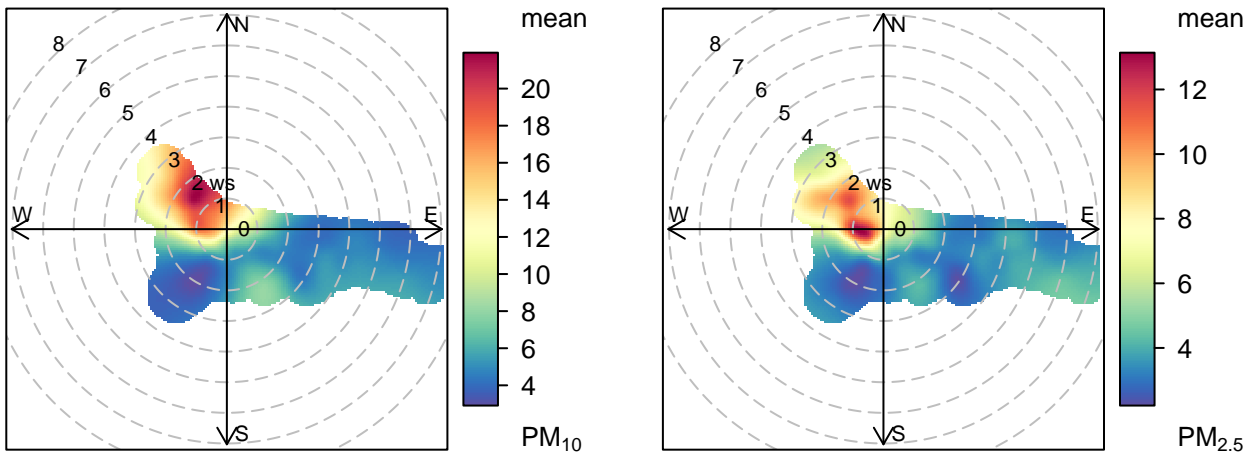


Northern Grounds – 24-hour average PM_{2.5}





Frequency of counts by wind direction (%)

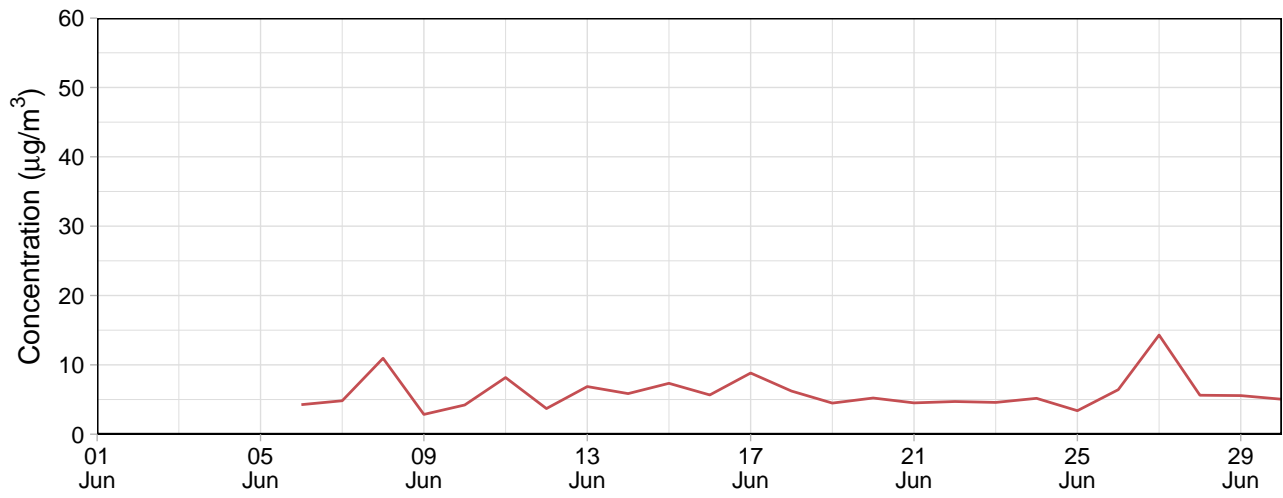


Eastern Grounds

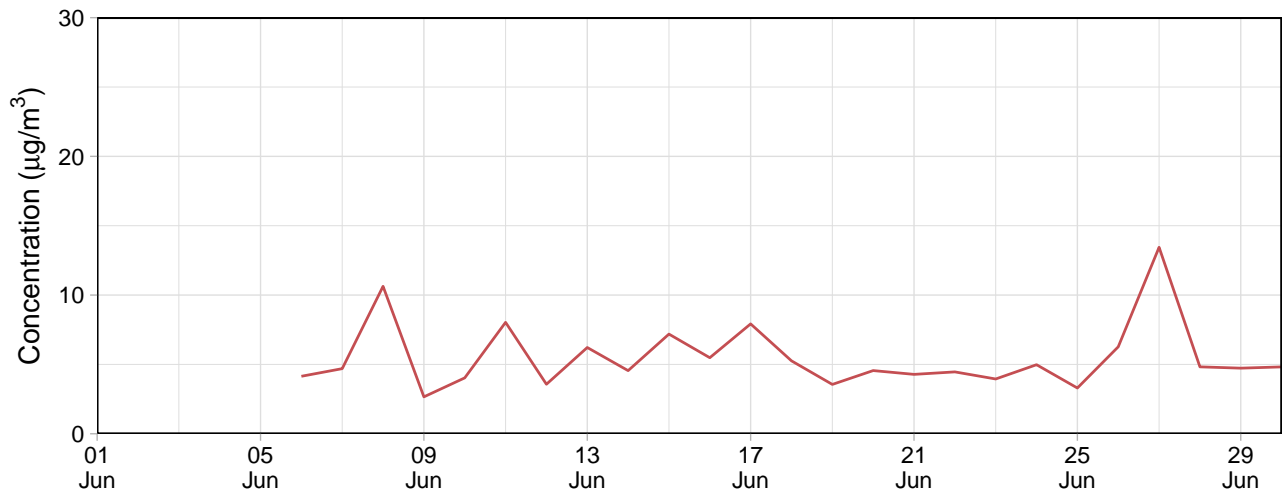
No data available for the reporting period.

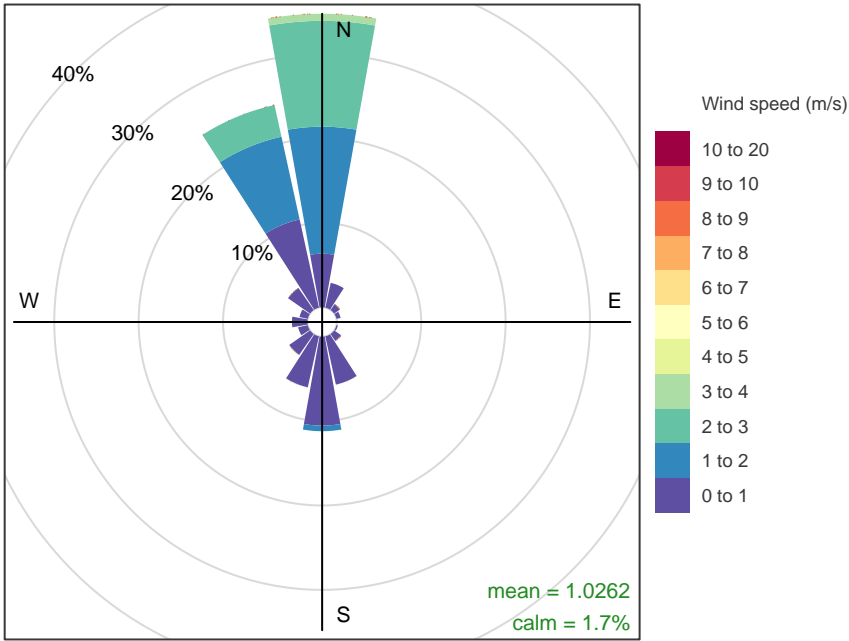
Southern Grounds

Southern Grounds – 24-hour average PM₁₀

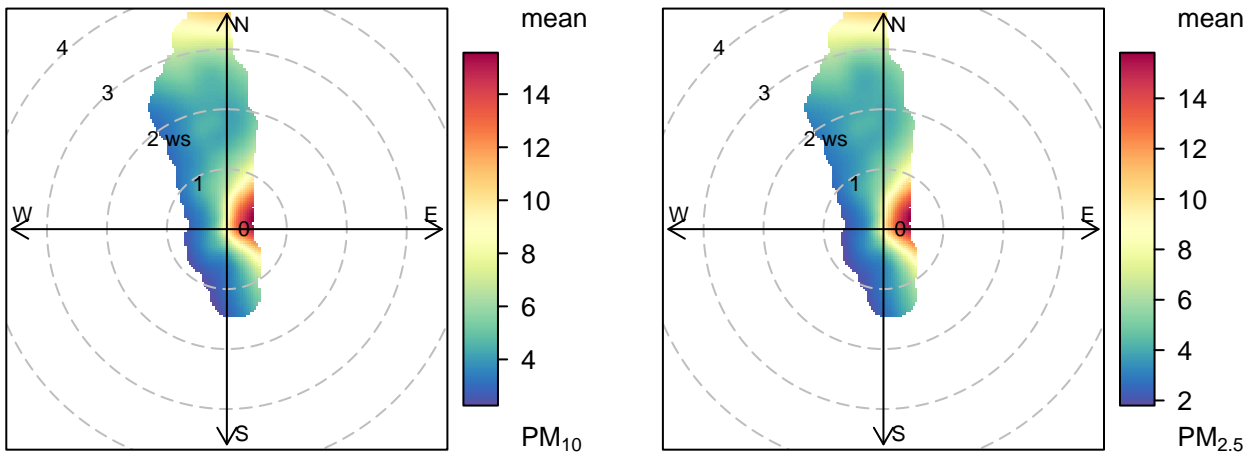


Southern Grounds – 24-hour average PM_{2.5}



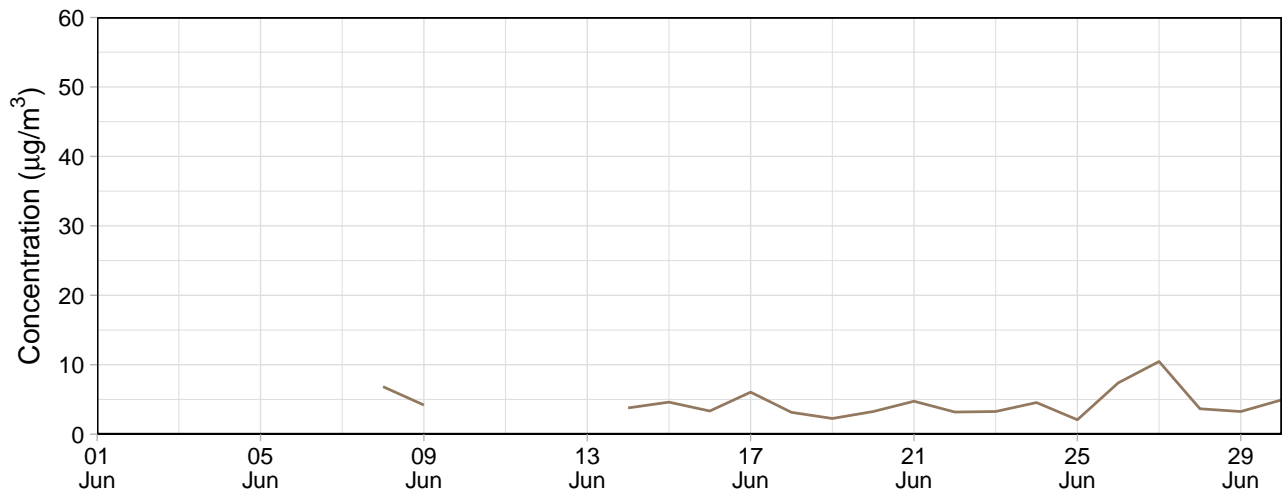


Frequency of counts by wind direction (%)

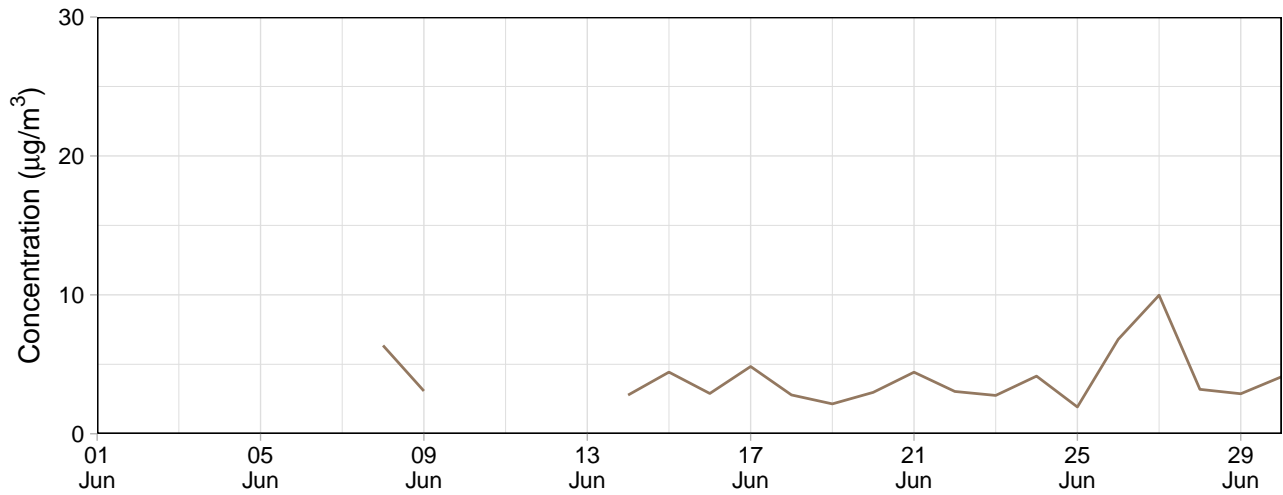


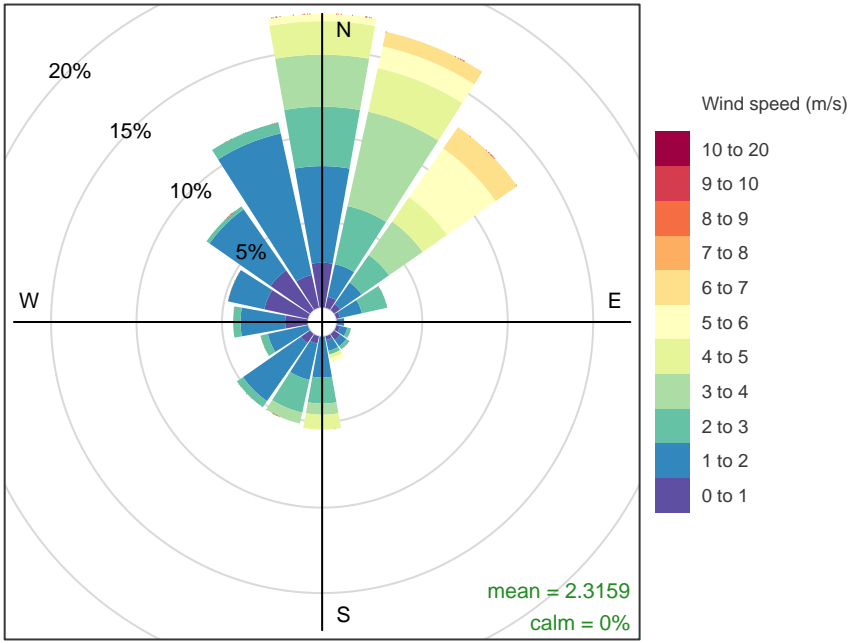
Block 9

Block 9 – 24-hour average PM₁₀

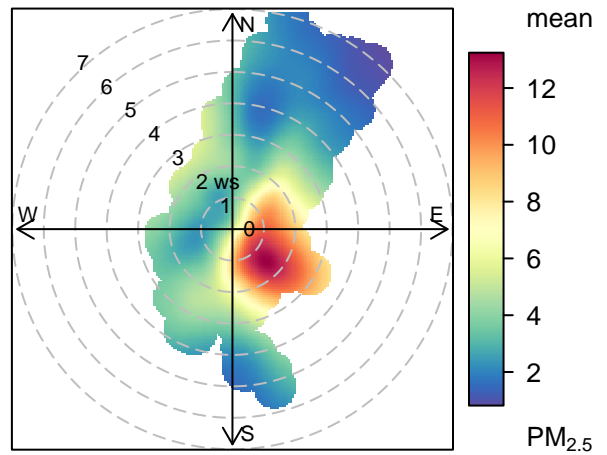
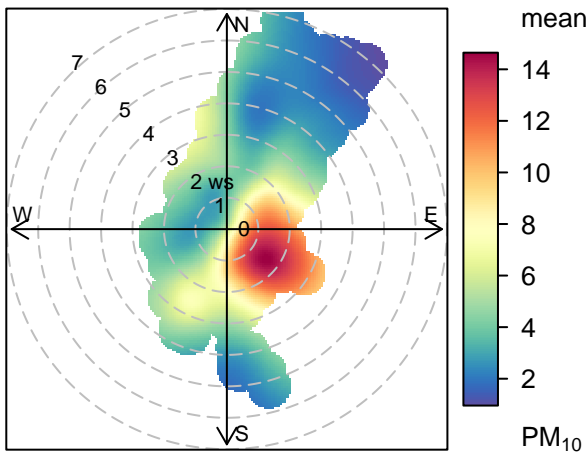


Block 9 – 24-hour average PM_{2.5}





Frequency of counts by wind direction (%)



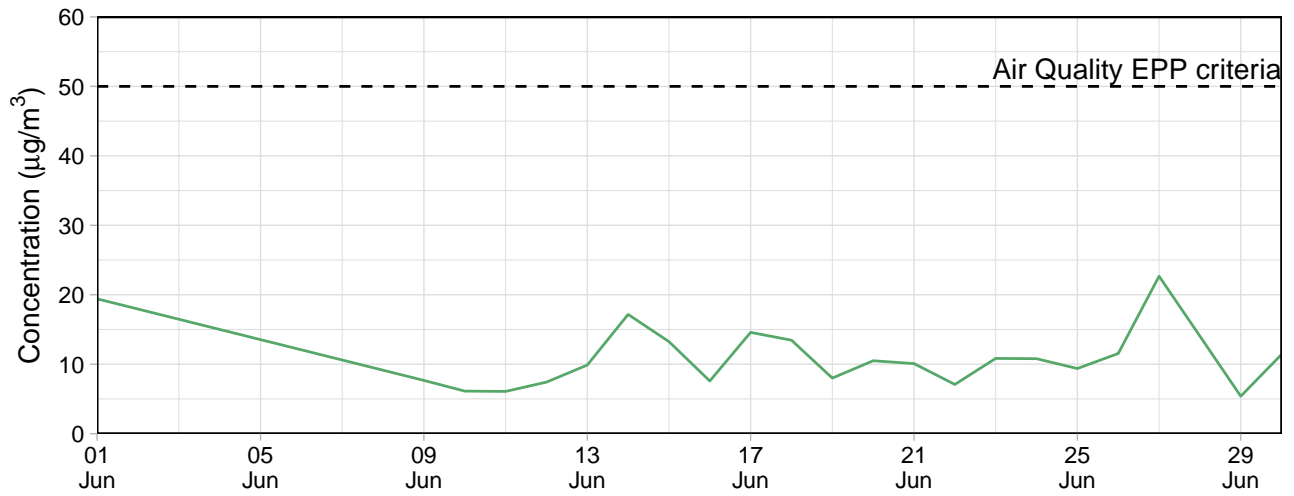
EPA Monitoring

Le Fevre 1

Table 3: Summary of 24-hour average data collected at EPA monitors ($\mu\text{g}/\text{m}^3$)

Site	PM ₁₀				PM _{2.5}			
	Min	Avg	Max	Capture (%)	Min	Avg	Max	Capture (%)
Le Fevre 1	5.4	11.1	22.7	100	2	3.8	8.2	100

Le Fevre 1 – 24-hour average PM₁₀



Le Fevre 1 – 24-hour average PM_{2.5}

